

SUSPENSION DOBLE CABLE



• Instrucciones

■ Instructions

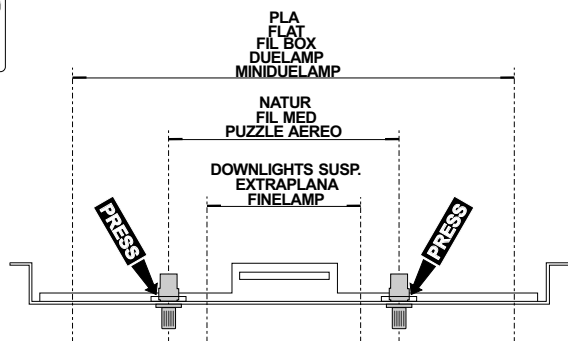
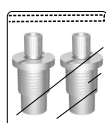
▲ Instruction

◆ Anweisungen

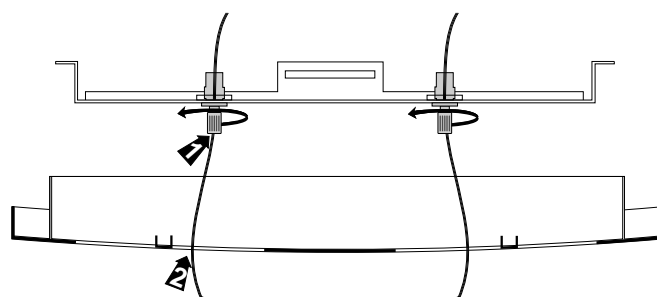
LMP
LIGHTING

1- SUSPENSIÓN MECÁNICA

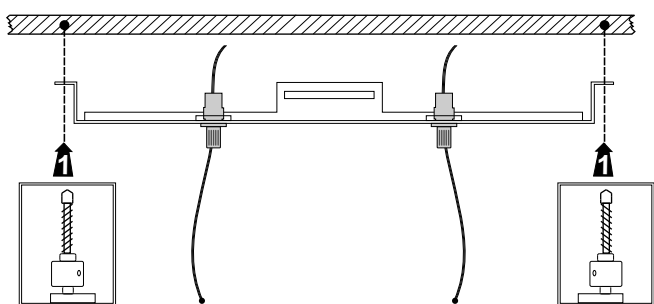
REF 96.07.49.0 - 96.07.49.3



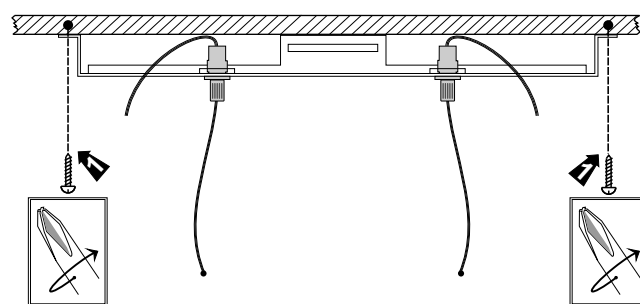
1



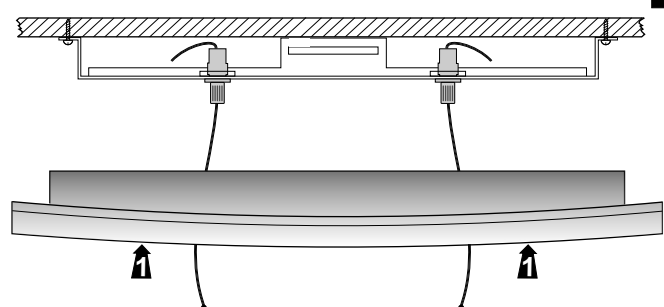
2



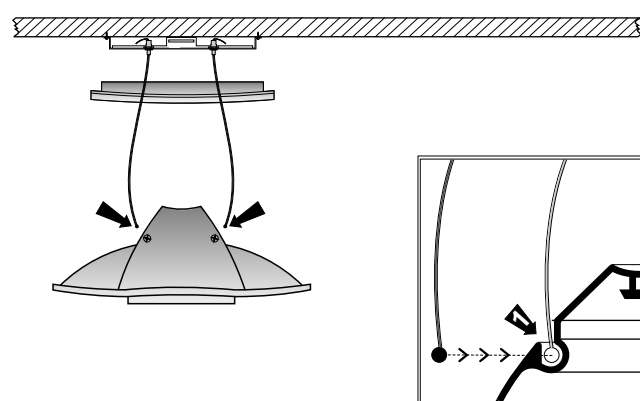
3



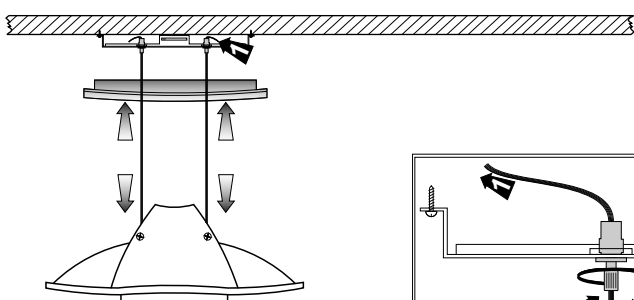
4



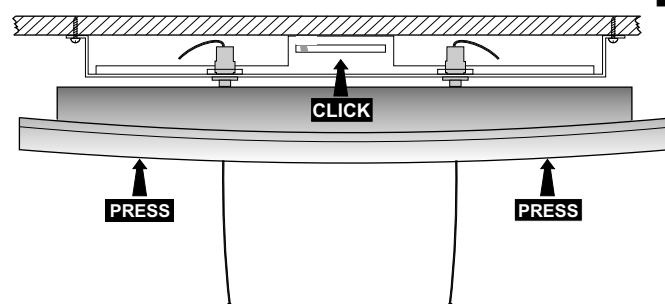
5



6



7

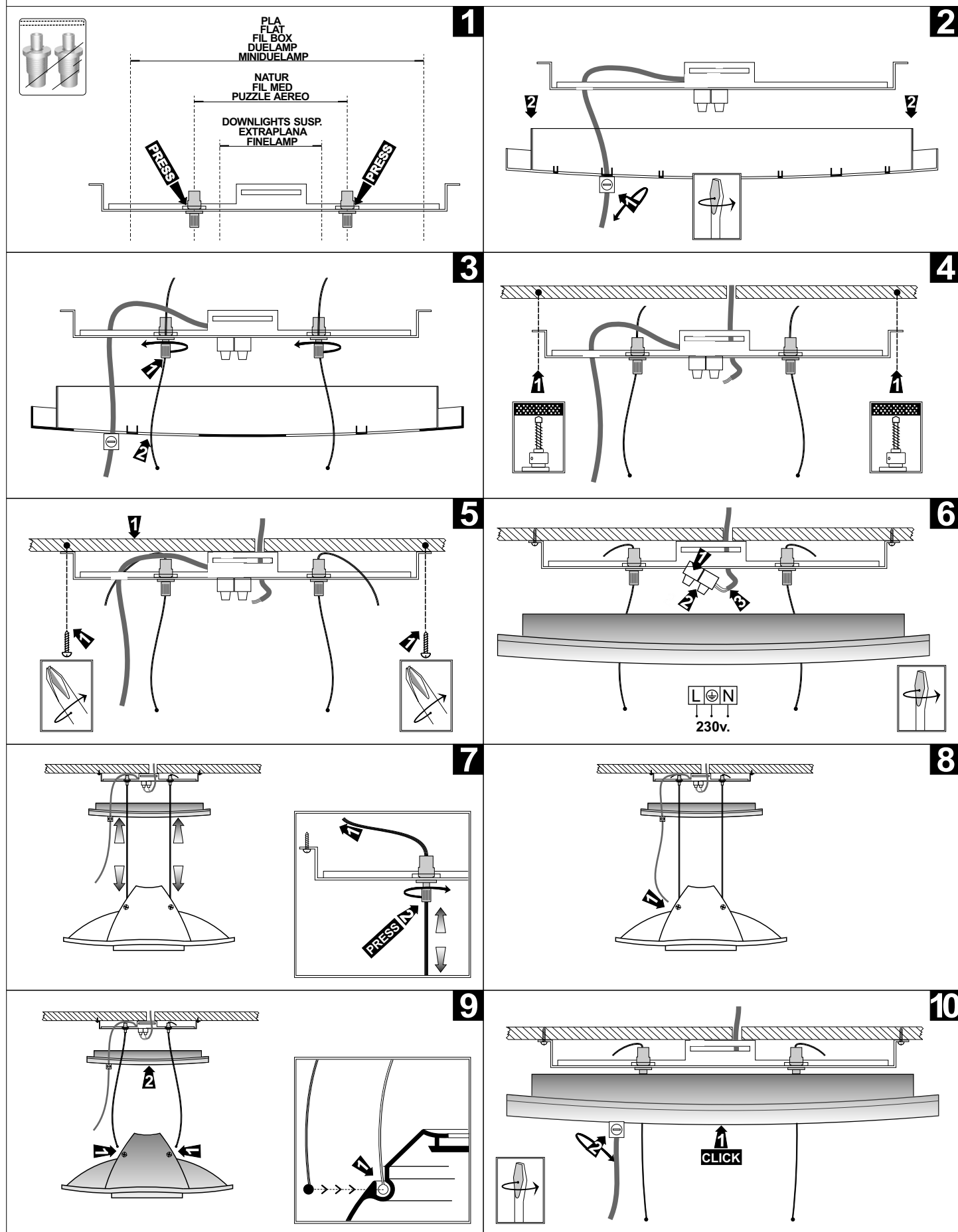


8

1000390 (C)

2- SUSPENSIÓN ELECTROMECÁNICA

REF 96.27.49.0 - 96.27.49.3



● El fabricante no asume las responsabilidades derivadas del uso y montaje incorrectos de sus productos.

■ Le fabricant n'assume pas les responsabilités dérivées de l'emploi et du montage incorrects de ses produits.

▲ The manufacturer is not responsible for the incorrect use and assembly of its products.

◆ Der Hersteller übernimmt keine Haftung für Schäden aufgrund fehlerhafter Montage oder inkorrektem Gebrauch seiner Produkte.

EL EMBALAJE DE ESTE PRODUCTO ESTÁ CONSIDERADO COMO ENVASE INDUSTRIAL, SIENDO SU RECEPTOR UN PROFESIONAL.



Córdoba, 16, 08226 Terrassa (BCN)
Tel . 902 20 40 10
Fax . 93 786 15 51
www.lamp.es - lamp@lamp.es

1000390 (C)