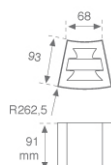
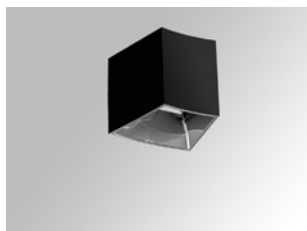


TRAIN

TR1CSF103830NB



TRAIN IND CVD 300 WW GRH.

Description:

Curved individual surface mounting downlight model TRAIN IND CVD 300 WW GRH., LAMP brand. Made of texturised graphite lacquered extruded aluminium. Model for LED MID-POWER, with warm white colour temperature and control gear included. It has a patented optical unit made of metallized matte ABS for high visual comfort (UGR<19). Insulation class I.

Finish: Texturised graphite RAL 7021

Weight: 570 g

Installation: Surface

TECHNICAL SPECIFICATIONS:

Light output:	308 lm	°K :	3000
Plum:	8,4W	CRI :	80
Efficacy:	36,7 lm/w	MacAdam:	3
Type:	COB CITIZEN	Power Supply:	100-240V 50/60Hz
LED Lifetime:	75.000 L80 B10	Gear:	Electronic
Power:	6W		

Light output tolerance +/- 10%



PHOTOMETRIC DATA :

