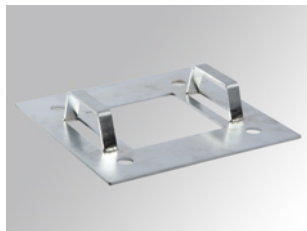


SMFT205



POLE ACC. 205MM FIXATION PATTERN

Description:

Accessory for pole model POLE ACC. 205MM FIXATION PATTERN, LAMP brand. Fixation pattern type. For M18 bolts (distance between bolts: 205x205mm). Manufactured in galvanised steel.

Weight: 2.110 g

Installation:

TECHNICAL SPECIFICATIONS:



CUSTOM MADE OPTIONS:

PHOTOMETRIC DATA :