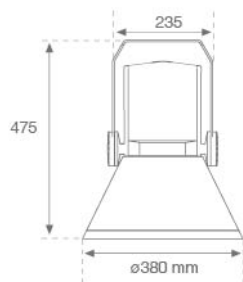


SHOT 380

SH33810MF840NA



SHOT 380 G3 10000 840 MFL ANT

Description:

LAMP outdoor Medium Floodlight with bracket to install on surface, on pole or column, model SHOT 380 G3 10000. Body made of die-cast lacquered aluminium, with tempered glass, stainless steel screws and silicone gasket. Passive dissipation for a suitable thermal management. MID-POWER LED, 4000K colour temperature, CRI80. Medium Flood optic. Adjustable 270°. ON/OFF electronic gear. IP65 and IK08 rated. Insulation class 1. Lifetime: 100.000 L90 B10 (Ta=25°C). BUG Rate: B3 U0 G0, ULOR: 0%. Easy installation, supplied with hose and connector. Available finishes: anthracite and textured grey.

Finish: Textured anthracite

Weight: 12.204 g

Maximum surface exposed to wind: 0 M2

Installation: Surface

TECHNICAL SPECIFICATIONS:

Light output:	8.743 lm	°K :	4000
Plum:	59,5W	CRI :	80
Efficacy:	146,9 lm/w	MacAdam:	3
Type:	MID POWER	Power Supply:	220-240V 50/60Hz
LED Lifetime:	100.000 L90 B10 (Ta=25°C)	Gear:	Electronic
Power:	53,5W		

Light output tolerance +/- 10%

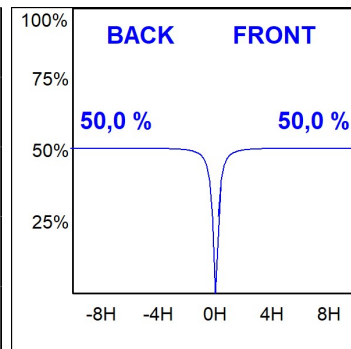
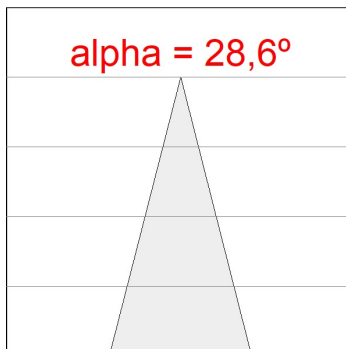
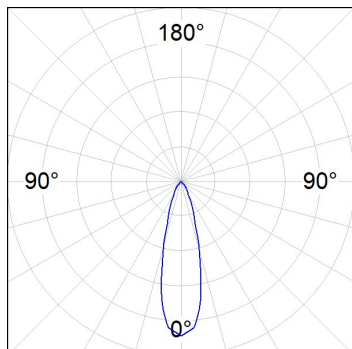



CUSTOM MADE OPTIONS:



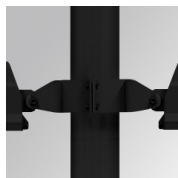
PHOTOMETRIC DATA :

SH33810MF840NA
 $\eta = 100\%$
 $I_{max} = 2650 \text{ cd/klm}$
UTE: 1,00A
CIE: 90 98 100 100 100



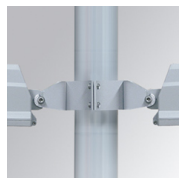
ACCESORIES :

Support



Product code:
COARDB120A
COARIN120A

Description:
ACC. CO ARM DB 120-130 ANT.
ACC. CO ARM IND 120-130 ANT.



Product code:
COARDB120G
COARIN120G

Description:
ACC. CO ARM DB 120-130 GR.
ACC. CO ARM IND 120-130 GR.



Product code:
COARIN060A

Description:
ACC. CO ARM IND 60-135 ANT.



Product code:
COARIN060G

Description:
ACC. CO ARM IND 60-135 GR.



Product code:
COARLODB60A
COARLODB76A

Description:
ACC. CO ARM LONG DB Ø60 ANT.
ACC. CO ARM LONG DB Ø76 ANT.



Product code:
COARLODB60G
COARLODB76G

Description:
ACC. CO ARM LONG DB Ø60 GR.
ACC. CO ARM LONG DB Ø76 GR.



Product code:
COARLOIN60A
COARLOIN76A

Description:
ACC. CO ARM LONG IND Ø60 ANT.
ACC. CO ARM LONG IND Ø76 ANT.



Product code:
COARLOIN60G
COARLOIN76G

Description:
ACC. CO ARM LONG IND Ø60 GR.
ACC. CO ARM LONG IND Ø76 GR.



Product code:
COARLOINT080A

Description:
ACC. CO ARM LONG INT ANT.



Product code:
COARLOINT080G

Description:
ACC. CO ARM LONG INT GR.

SHOT 380



Product code:
COARSHDB60A
COARSHDB76A

Description:
ACC. CO ARM SHORT DB Ø60 ANT.
ACC. CO ARM SHORT DB Ø76 ANT.



Product code:
COARSHDB60G
COARSHDB76G

Description:
ACC. CO ARM SHORT DB Ø60 GR.
ACC. CO ARM SHORT DB Ø76 GR.



Product code:
COARSHIN60A
COARSHIN76A

Description:
ACC. CO ARM SHORT IND Ø60 ANT.
ACC. CO ARM SHORT IND Ø76 ANT.



Product code:
COARSHIN60G
COARSHIN76G

Description:
ACC. CO ARM SHORT IND Ø60 GR.
ACC. CO ARM SHORT IND Ø76 GR.



Product code:
COARSHINT080A

Description:
ACC. CO ARM SHORT INT ANT.



Product code:
COARSHINT080G

Description:
ACC. CO ARM SHORT INT GR.



Product code:
FXARWAA

Description:
ACC. FX ARM WALL ANT.

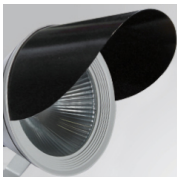


Product code:
FXARWAG

Description:
ACC. FX ARM WALL GR.

ACCESORIES :

Optical



Product code:
SH38SC381B

Description:
SHOT 380 ACC. ANTIGLARE SCREEN