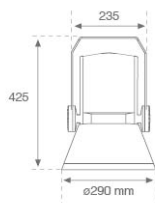


SHOT 290

SH32906SP840NG



SHOT 290 G3 5500 840 SP GR

Description:

LAMP outdoor Streetlight with bracket to install on surface, on pole or column, model SHOT 290 G3 5500. Body made of die-cast lacquered aluminium, with tempered glass, stainless steel screws and silicone gasket. Passive dissipation for a suitable thermal management. HIGH POWER LED, 4000K colour temperature, CRI80. Spot optic. Adjustable 270°. ON/OFF electronic gear. IP65 and IK08 rated. Insulation class 1. Lifetime: 100.000 L90 B10 (Ta=25°C). BUG Rate: B3 U0 G0, ULOR: 0%. Easy installation, supplied with hose and connector. Available finishes: anthracite and textured grey.

Finish: Texturised grey

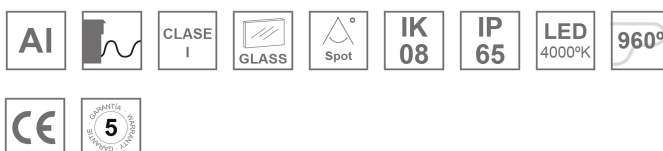
Weight: 8.608 g

Maximum surface exposed to wind: 0 M2

Installation: Surface

TECHNICAL SPECIFICATIONS:

Light output:	4.541 lm	°K :	4000
Plum:	34,8W	CRI :	80
Efficacy:	130,5 lm/w	MacAdam:	4
UGR:	<19	Power Supply:	220-240V 50/60Hz
Type:	HIGH POWER	Gear:	Electronic
LED Lifetime:	100.000 L90 B10 (Ta=25°C)		
Power:	31,6W		

Light output tolerance +/- 10%


CUSTOM MADE OPTIONS:

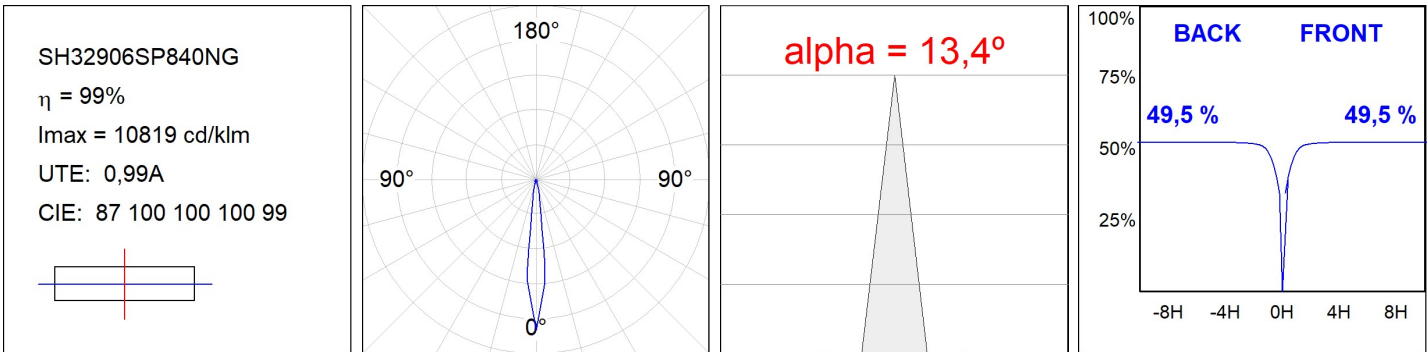


SHOT 290

SH32906SP840NG

SHOT 290 G3 5500 840 SP GR

PHOTOMETRIC DATA :



ACCESORIES :

Support

**Product code:**

COARDB120A

COARIN120A

Description:

ACC. CO ARM DB 120-130 ANT.

ACC. CO ARM IND 120-130 ANT.

**Product code:**

COARDB120G

COARIN120G

Description:

ACC. CO ARM DB 120-130 GR.

ACC. CO ARM IND 120-130 GR.

**Product code:**

COARIN060A

Description:

ACC. CO ARM IND 60-135 ANT.

**Product code:**

COARIN060G

Description:

ACC. CO ARM IND 60-135 GR.

**Product code:**

COARLODB60A

COARLODB76A

Description:

ACC. CO ARM LONG DB Ø60 ANT.

ACC. CO ARM LONG DB Ø76 ANT.

**Product code:**

COARLODB60G

COARLODB76G

Description:

ACC. CO ARM LONG DB Ø60 GR.

ACC. CO ARM LONG DB Ø76 GR.

**Product code:**

COARLOIN60A

COARLOIN76A

Description:

ACC. CO ARM LONG IND Ø60 ANT.

ACC. CO ARM LONG IND Ø76 ANT.

**Product code:**

COARLOIN60G

COARLOIN76G

Description:

ACC. CO ARM LONG IND Ø60 GR.

ACC. CO ARM LONG IND Ø76 GR.

**Product code:**

COARLOINT080A

Description:

ACC. CO ARM LONG INT ANT.

**Product code:**

COARLOINT080G

Description:

ACC. CO ARM LONG INT GR.

SHOT 290



Product code:
COARSHDB60A
COARSHDB76A

Description:
ACC. CO ARM SHORT DB Ø60 ANT.
ACC. CO ARM SHORT DB Ø76 ANT.



Product code:
COARSHDB60G
COARSHDB76G

Description:
ACC. CO ARM SHORT DB Ø60 GR.
ACC. CO ARM SHORT DB Ø76 GR.



Product code:
COARSHIN60A
COARSHIN76A

Description:
ACC. CO ARM SHORT IND Ø60 ANT.
ACC. CO ARM SHORT IND Ø76 ANT.



Product code:
COARSHIN60G
COARSHIN76G

Description:
ACC. CO ARM SHORT IND Ø60 GR.
ACC. CO ARM SHORT IND Ø76 GR.



Product code:
COARSHINT080A

Description:
ACC. CO ARM SHORT INT ANT.



Product code:
COARSHINT080G

Description:
ACC. CO ARM SHORT INT GR.



Product code:
FXARWAA

Description:
ACC. FX ARM WALL ANT.

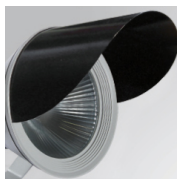


Product code:
FXARWAG

Description:
ACC. FX ARM WALL GR.

ACCESORIES :

Optical



Product code:
SH29SC297B

Description:
SHOT 290 ACC. ANTIGLARE SCREEN