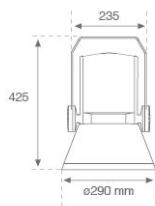


SHOT 290

SH32906SP830NG



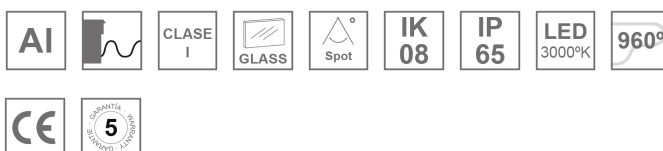
SHOT 290 G3 5500 830 SP GR

Description:

LAMP outdoor Streetlight with bracket to install on surface, on pole or column, model SHOT 290 G3 5500. Body made of die-cast lacquered aluminium, with tempered glass, stainless steel screws and silicone gasket. Passive dissipation for a suitable thermal management. HIGH POWER LED, 3000K colour temperature, CRI80. Spot optic. Adjustable 270°. ON/OFF electronic gear. IP65 and IK08 rated. Insulation class 1. Lifetime: 100.000 L90 B10 (Ta=25°C). BUG Rate: B3 U0 G0, ULOR: 0%. Easy installation, supplied with hose and connector. Available finishes: anthracite and textured grey.

Finish: Texturised grey**Weight:** 8.608 g**Maximum surface exposed to wind:** 0 M2**Installation:** Surface**TECHNICAL SPECIFICATIONS:**

Light output:	4.220 lm	°K :	3000
Plum:	34,8W	CRI :	80
Efficacy:	121,3 lm/w	MacAdam:	4
UGR:	<19	Power Supply:	220-240V 50/60Hz
Type:	HIGH POWER	Gear:	Electronic
LED Lifetime:	100.000 L90 B10 (Ta=25°C)		
Power:	31,6W		

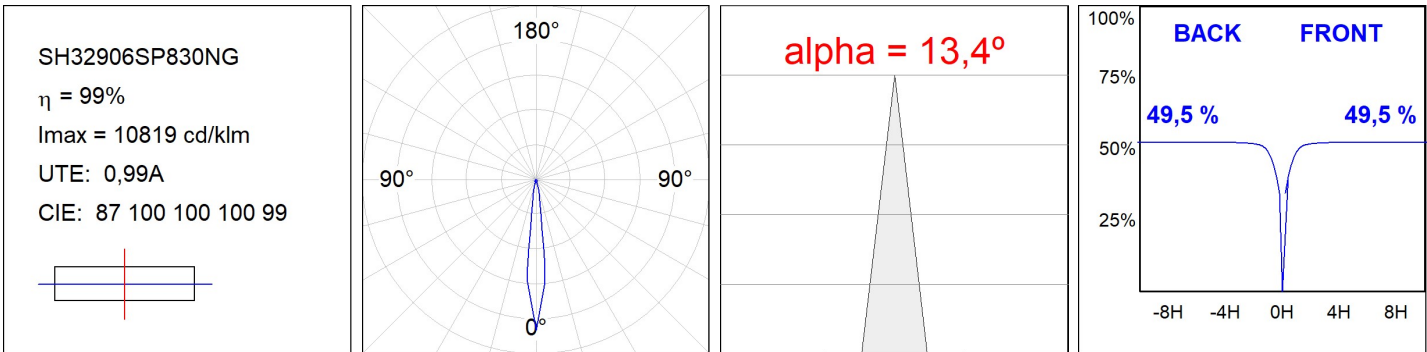
Light output tolerance +/- 10%**CUSTOM MADE OPTIONS:**

SHOT 290

SH32906SP830NG

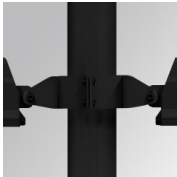
SHOT 290 G3 5500 830 SP GR

PHOTOMETRIC DATA :



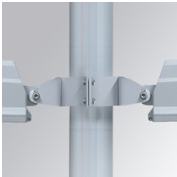
ACCESORIES :

Support



Product code:
COARDB120A
COARIN120A

Description:
ACC. CO ARM DB 120-130 ANT.
ACC. CO ARM IND 120-130 ANT.



Product code:
COARDB120G
COARIN120G

Description:
ACC. CO ARM DB 120-130 GR.
ACC. CO ARM IND 120-130 GR.



Product code:
COARIN060A

Description:
ACC. CO ARM IND 60-135 ANT.



Product code:
COARIN060G

Description:
ACC. CO ARM IND 60-135 GR.



Product code:
COARLODB60A
COARLODB76A

Description:
ACC. CO ARM LONG DB Ø60 ANT.
ACC. CO ARM LONG DB Ø76 ANT.



Product code:
COARLODB60G
COARLODB76G

Description:
ACC. CO ARM LONG DB Ø60 GR.
ACC. CO ARM LONG DB Ø76 GR.



Product code:
COARLOIN60A
COARLOIN76A

Description:
ACC. CO ARM LONG IND Ø60 ANT.
ACC. CO ARM LONG IND Ø76 ANT.



Product code:
COARLOIN60G
COARLOIN76G

Description:
ACC. CO ARM LONG IND Ø60 GR.
ACC. CO ARM LONG IND Ø76 GR.



Product code:
COARLOINT080A

Description:
ACC. CO ARM LONG INT ANT.



Product code:
COARLOINT080G

Description:
ACC. CO ARM LONG INT GR.

SHOT 290



Product code:
COARSHDB60A
COARSHDB76A

Description:
ACC. CO ARM SHORT DB Ø60 ANT.
ACC. CO ARM SHORT DB Ø76 ANT.



Product code:
COARSHDB60G
COARSHDB76G

Description:
ACC. CO ARM SHORT DB Ø60 GR.
ACC. CO ARM SHORT DB Ø76 GR.



Product code:
COARSHIN60A
COARSHIN76A

Description:
ACC. CO ARM SHORT IND Ø60 ANT.
ACC. CO ARM SHORT IND Ø76 ANT.



Product code:
COARSHIN60G
COARSHIN76G

Description:
ACC. CO ARM SHORT IND Ø60 GR.
ACC. CO ARM SHORT IND Ø76 GR.



Product code:
COARSHINT080A

Description:
ACC. CO ARM SHORT INT ANT.



Product code:
COARSHINT080G

Description:
ACC. CO ARM SHORT INT GR.



Product code:
FXARWAA

Description:
ACC. FX ARM WALL ANT.

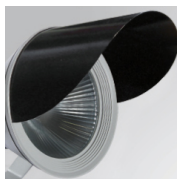


Product code:
FXARWAG

Description:
ACC. FX ARM WALL GR.

ACCESORIES :

Optical



Product code:
SH29SC297B

Description:
SHOT 290 ACC. ANTIGLARE SCREEN