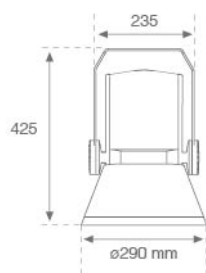


SHOT 290

SH22965SP830NG



SHOT 290 G2 6500 8WW SP GR.

Description:

Outdoor projector model SHOT 290 G2 6500, LAMP brand. Manufactured with texturized grey lacquered die cast aluminium, with tempered glass, stainless steel screws and silicone gasket. Passive dissipation for thermal management. Model for LED HI-POWER, 3000K colour temperature, CRI 80 and control gear included. With Spot optics. IP65, IK08 protection rating. Insulation class I. Lifetime: 60.000 L80B10. BUG Rate: B0 U0 G0, ULOR: 0%. Available finishes: anthracite and textured grey

Finish: Texturised grey

Weight: 8.608 g

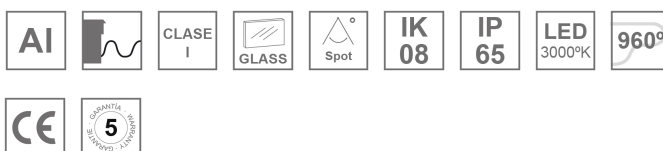
Maximum surface exposed to wind: 0.13 M2

Installation: Surface

TECHNICAL SPECIFICATIONS:

Light output:	4.011 lm	°K :	3000
Plum:	48W	CRI :	80
Efficacy:	83,6 lm/w	MacAdam:	4
Type:	HIGH POWER LED	Power Supply:	220-240V 50/60Hz
LED Lifetime:	60.000 L80 B10 (Ta=25°C)	Gear:	Electronic
Power:	44W		

Light output tolerance +/- 10%



CUSTOM MADE OPTIONS:

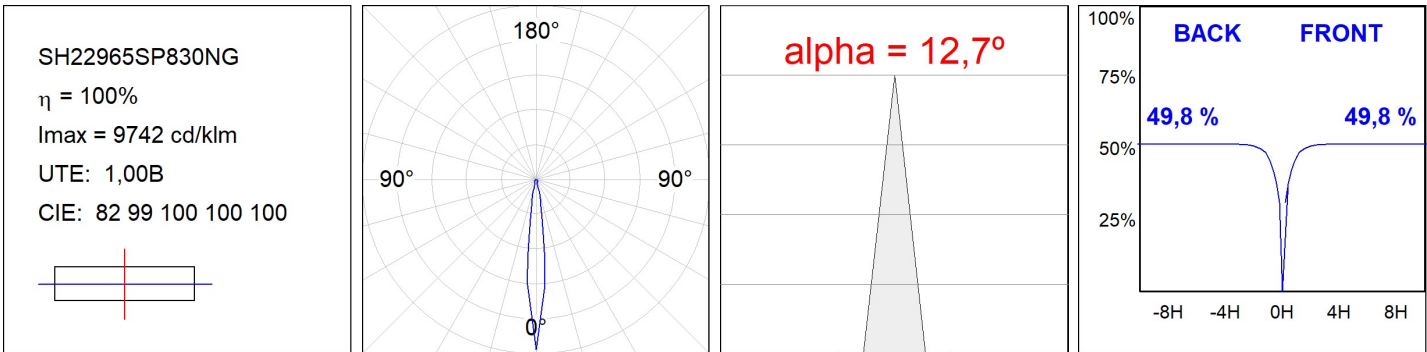


SHOT 290

SH22965SP830NG

SHOT 290 G2 6500 8WW SP GR.

PHOTOMETRIC DATA :



ACCESORIES :

Support



Product code:
COARDB120A
COARIN120A

Description:
ACC. CO ARM DB 120-130 ANT.
ACC. CO ARM IND 120-130 ANT.



Product code:
COARDB120G
COARIN120G

Description:
ACC. CO ARM DB 120-130 GR.
ACC. CO ARM IND 120-130 GR.



Product code:
COARIN060A

Description:
ACC. CO ARM IND 60-135 ANT.



Product code:
COARIN060G

Description:
ACC. CO ARM IND 60-135 GR.



Product code:
COARLODB60A
COARLODB76A

Description:
ACC. CO ARM LONG DB Ø60 ANT.
ACC. CO ARM LONG DB Ø76 ANT.



Product code:
COARLODB60G
COARLODB76G

Description:
ACC. CO ARM LONG DB Ø60 GR.
ACC. CO ARM LONG DB Ø76 GR.



Product code:
COARLOIN60A
COARLOIN76A

Description:
ACC. CO ARM LONG IND Ø60 ANT.
ACC. CO ARM LONG IND Ø76 ANT.



Product code:
COARLOIN60G
COARLOIN76G

Description:
ACC. CO ARM LONG IND Ø60 GR.
ACC. CO ARM LONG IND Ø76 GR.



Product code:
COARLOINT080A

Description:
ACC. CO ARM LONG INT ANT.



Product code:
COARLOINT080G

Description:
ACC. CO ARM LONG INT GR.

SHOT 290



Product code:
COARSHDB60A
COARSHDB76A

Description:
ACC. CO ARM SHORT DB Ø60 ANT.
ACC. CO ARM SHORT DB Ø76 ANT.



Product code:
COARSHDB60G
COARSHDB76G

Description:
ACC. CO ARM SHORT DB Ø60 GR.
ACC. CO ARM SHORT DB Ø76 GR.



Product code:
COARSHIN60A
COARSHIN76A

Description:
ACC. CO ARM SHORT IND Ø60 ANT.
ACC. CO ARM SHORT IND Ø76 ANT.



Product code:
COARSHIN60G
COARSHIN76G

Description:
ACC. CO ARM SHORT IND Ø60 GR.
ACC. CO ARM SHORT IND Ø76 GR.



Product code:
COARSHINT080A

Description:
ACC. CO ARM SHORT INT ANT.



Product code:
COARSHINT080G

Description:
ACC. CO ARM SHORT INT GR.



Product code:
FXARWAA

Description:
ACC. FX ARM WALL ANT.

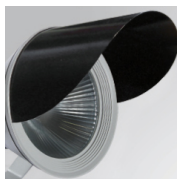


Product code:
FXARWAG

Description:
ACC. FX ARM WALL GR.

ACCESORIES :

Optical



Product code:
SH29SC297B

Description:
SHOT 290 ACC. ANTIGLARE SCREEN