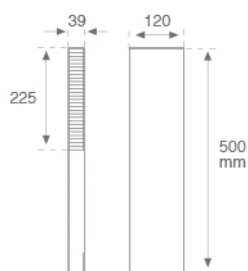
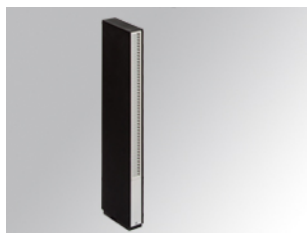


SE1050D03SO830NBW



SETI SOFT DB 500 WW BK.

Description:

Bollard model SETI SOFT DB 500 LAMP brand. Made of exterior textured black and interior textured white painted. Made in extruded recycled aluminum with a rate of 80%. Model for LED MID-POWER, with 3000K colour temperature and control gear included. IP65, IK08 protection rating. Insulation class II. Life time: 50. 000 L90 B10. BUG Rate: B0 U1 G0, ULOR: 10,7%.

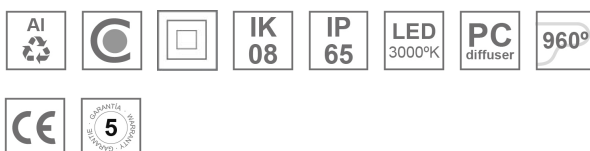
Finish: Texturised black RAL 9011

Dimensions: 120 x 39 x 500 mm

Weight: 2.250 g

Installation: Standing
TECHNICAL SPECIFICATIONS:

Light output:	49 lm	°K :	3000
Plum:	3,9W	CRI :	80
Efficacy:	12,6 lm/w	MacAdam:	3.5
Type:	MID POWER LED	Power Supply:	110-240V 50/60Hz
LED Lifetime:	50.000 L90 B10 (Ta=25°C)	Gear:	Electronic
Power:	3.5W		

Light output tolerance +/- 10%
**CUSTOM MADE OPTIONS:**

PHOTOMETRIC DATA :

