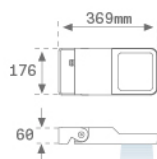
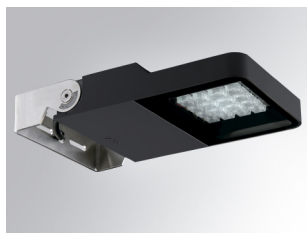


FLUT 180

MF265SY740NA



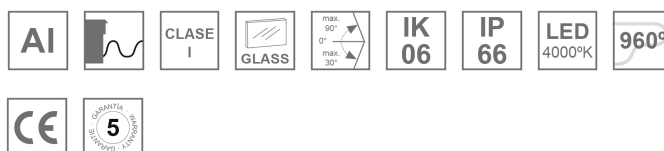
FLUT 180 G2 6500 NW SYM ANT.

Description:

Surface mounting outdoor luminaire model MINI FLUT G2 6500 NW SYM ANT. ,LAMP brand. Manufactured in aluminium injection body lacquered in anthracite colour and serigraphed tempered glass. Made of AISI304 inox steel bended axle. Body's low height of 60mm. Model for HI-POWER LED, neutral white colour and control gear included. With symmetric Wide Flood optics. IP66, IK06 protection rating. Insulation class I. Its axle allows swivels between 90° and -30°.

Finish: Textured anthracite**Weight:** 4.104 g**Maximum surface exposed to wind:** 0.04 M2**Installation:** Surface**TECHNICAL SPECIFICATIONS:**

Light output:	5.577 lm	°K :	4000
Plum:	48,7W	CRI :	70
Efficacy:	114,5 lm/w	MacAdam:	4
Type:	HIGH POWER PHILIPS	Power Supply:	220-240V 50/60Hz
LED Lifetime:	60.000 L80 B10	Gear:	Electronic
Power:	44W		

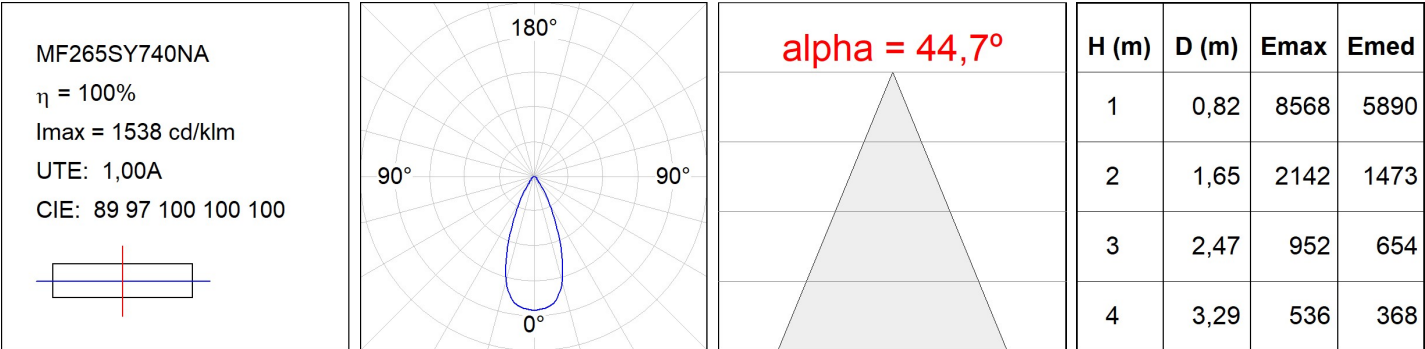
Light output tolerance +/- 10%**CUSTOM MADE OPTIONS:**

FLUT 180

MF265SY740NA

FLUT 180 G2 6500 NW SYM ANT.

PHOTOMETRIC DATA :



ACCESORIES :

Support



Product code:
COARDB120A
COARIN120A

Description:
ACC. CO ARM DB 120-130 ANT.
ACC. CO ARM IND 120-130 ANT.



Product code:
COARDB120G
COARIN120G

Description:
ACC. CO ARM DB 120-130 GR.
ACC. CO ARM IND 120-130 GR.



Product code:
COARIN060A

Description:
ACC. CO ARM IND 60-135 ANT.



Product code:
COARIN060G

Description:
ACC. CO ARM IND 60-135 GR.