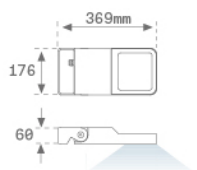
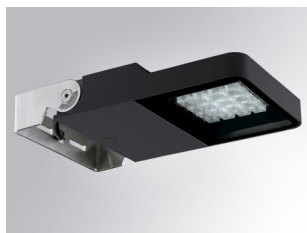


FLUT 180

MF265ST830NA



FLUT 180 G2 6500 8WW STREET ANT.

Description:

Surface mounting outdoor luminaire model FLUT 180 G2 STREET, LAMP brand. Manufactured in aluminium injection body lacquered and serigraphed tempered glass. Made of AISI304 inox steel bended axle. Body's low height of 60mm. Model for HI-POWER LED, 3000K colour, CRI 80 and control gear included. With street optics. IP66, IK06 protection rating. Insulation class I. Its axle allows swivels between 90° and -30°. Lifetime: 60.000 L80. BUG Rate: B1 U1 G1, ULOR 0%. Available finishes: anthracite and texturized grey.

Finish: Textured anthracite

Weight: 4.104 g

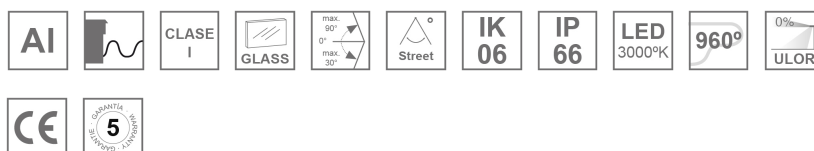
Maximum surface exposed to wind: 0.04 M2

Installation: Surface

TECHNICAL SPECIFICATIONS:

Light output:	4.741 lm	°K :	3000
Plum:	49,1W	CRI :	80
Efficacy:	96,6 lm/w	MacAdam:	4
Type:	HIGH POWER LED	Power Supply:	220-240V 50/60Hz
LED Lifetime:	60.000 L80 B10 (Ta=25°C)	Gear:	Electronic
Power:	45W		

Light output tolerance +/- 10%



CUSTOM MADE OPTIONS:

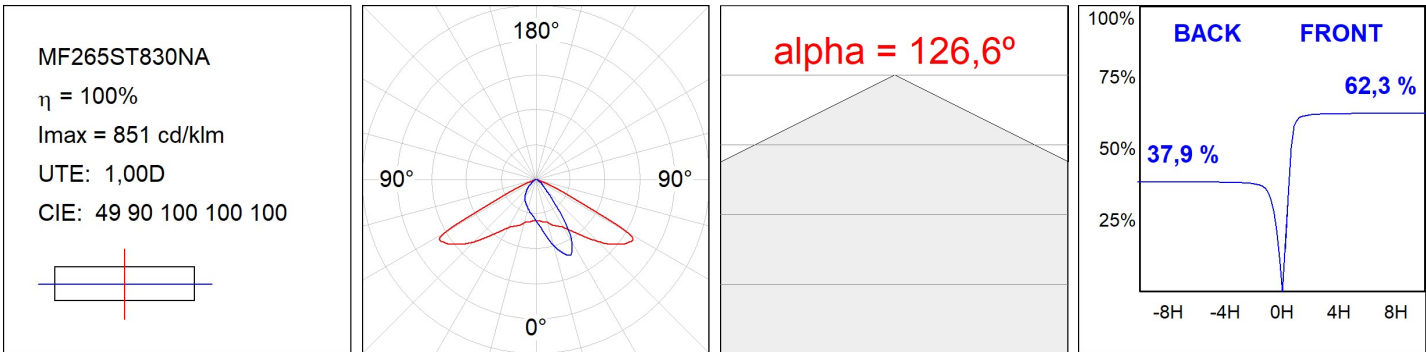


FLUT 180

MF265ST830NA

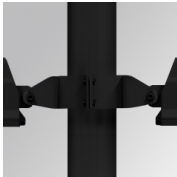
FLUT 180 G2 6500 8WW STREET ANT.

PHOTOMETRIC DATA :



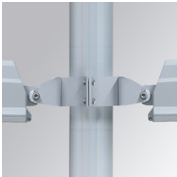
ACCESORIES :

Support



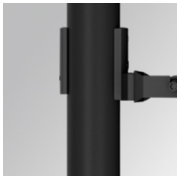
Product code:
COARDB120A
COARIN120A

Description:
ACC. CO ARM DB 120-130 ANT.
ACC. CO ARM IND 120-130 ANT.



Product code:
COARDB120G
COARIN120G

Description:
ACC. CO ARM DB 120-130 GR.
ACC. CO ARM IND 120-130 GR.



Product code:
COARIN060A

Description:
ACC. CO ARM IND 60-135 ANT.

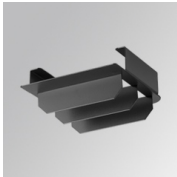


Product code:
COARIN060G

Description:
ACC. CO ARM IND 60-135 GR.

ACCESORIES :

Optical



Product code:
MFLOSTB

Description:
FLUT 180 ACC. STREET ANTIGLARE LOUVRES