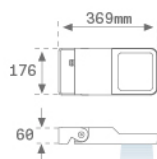
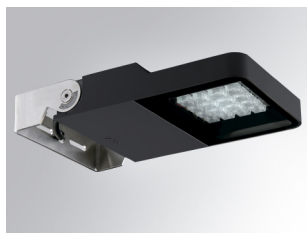


FLUT 180

MF235SY840NA



FLUT 180 G2 3500 8NW SYM ANT.

Description:

Surface mounting outdoor luminaire model FLUT 180 G2 SYM, LAMP brand. Manufactured in aluminium injection body lacquered and serigraphed tempered glass. Made of AISI304 inox steel bended axle. Body's low height of 60mm. Model for HI-POWER LED, 4000K colour, CRI 80 and control gear included. With symmetric Wide Flood optics. IP66, IK06 protection rating. Insulation class I. Its axle allows swivels between 90° and -30°. Lifetime: 50.000 L90B10. BUG Rate: B3 U0 G0, ULOR 0%. Available finishes: anthracite and texturized grey.

Finish: Textured anthracite

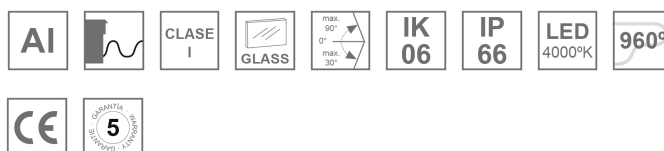
Weight: 4.104 g

Maximum surface exposed to wind: 0.04 M2

Installation: Surface

TECHNICAL SPECIFICATIONS:

Light output:	3.092 lm	°K :	4000
Plum:	25,7W	CRI :	80
Efficacy:	120,3 lm/w	MacAdam:	4
Type:	HIGH POWER LED	Power Supply:	220-240V 50/60Hz
LED Lifetime:	50.000 L90 B10 (Ta=25°C)	Gear:	Electronic
Power:	23W		

Light output tolerance +/- 10%


CUSTOM MADE OPTIONS:

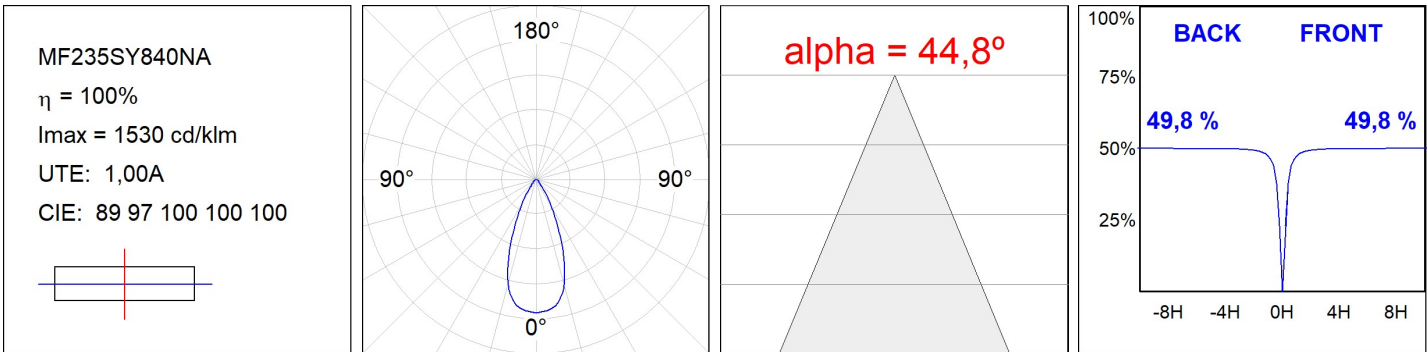


FLUT 180

MF235SY840NA

FLUT 180 G2 3500 8NW SYM ANT.

PHOTOMETRIC DATA :



ACCESORIES :

Support



Product code:
COARDB120A
COARIN120A

Description:
ACC. CO ARM DB 120-130 ANT.
ACC. CO ARM IND 120-130 ANT.



Product code:
COARDB120G
COARIN120G

Description:
ACC. CO ARM DB 120-130 GR.
ACC. CO ARM IND 120-130 GR.



Product code:
COARIN060A

Description:
ACC. CO ARM IND 60-135 ANT.



Product code:
COARIN060G

Description:
ACC. CO ARM IND 60-135 GR.