

## FLUT 180

MF235ST740NG



## FLUT 180 G2 3500 NW STREET GR.

## Description:

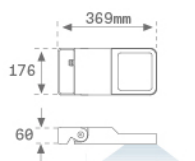
Surface mounting outdoor luminaire model MINI FLUT G2 3500 NW STREET GR., LAMP brand. Manufactured in aluminium injection body lacquered in texturized grey colour and serigraphed tempered glass. Made of AISI304 inox steel bended axle. Body's low height of 60mm. Model for HI-POWER LED, neutral white colour and control gear included. With street optics. IP66, IK06 protection rating. Insulation class I. Its axle allows swivels between 90° and -30°.

Finish: Texturised grey

Weight: 4.104 g

Maximum surface exposed to wind: 0.04 M2

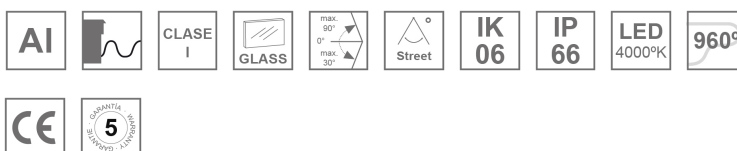
Installation: Surface



## TECHNICAL SPECIFICATIONS:

Light output:	3.126 lm	°K :	4000
Plum:	25,5W	CRI :	70
Efficacy:	122,6 lm/w	MacAdam:	4
Type:	HIGH POWER PHILIPS	Power Supply:	220-240V 50/60Hz
LED Lifetime:	50.000 L90 B10	Gear:	Electronic
Power:	23W		

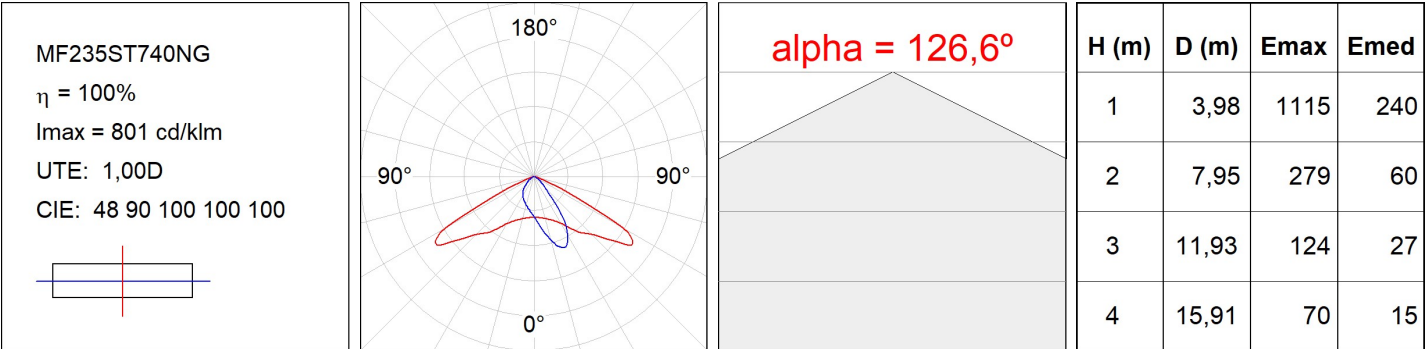
Light output tolerance +/- 10%



## CUSTOM MADE OPTIONS:



PHOTOMETRIC DATA :



ACCESORIES :

Support



**Product code:**  
COARDB120A  
COARIN120A

**Description:**  
ACC. CO ARM DB 120-130 ANT.  
ACC. CO ARM IND 120-130 ANT.



**Product code:**  
COARDB120G  
COARIN120G

**Description:**  
ACC. CO ARM DB 120-130 GR.  
ACC. CO ARM IND 120-130 GR.



**Product code:**  
COARIN060A

**Description:**  
ACC. CO ARM IND 60-135 ANT.

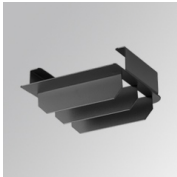


**Product code:**  
COARIN060G

**Description:**  
ACC. CO ARM IND 60-135 GR.

ACCESORIES :

Optical



**Product code:**  
MFLOSTB

**Description:**  
FLUT 180 ACC. STREET ANTIGLARE LOUVRES