

SHOT 80

MC209SP8400A



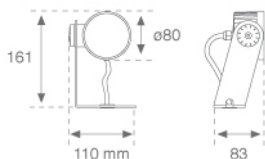
SHOT 80 G2 900 NW SP NO GEAR ANT.

Description:

Outdoor spotlight model SHOT 80 G2 900, LAMP brand. Made of lacquered aluminium injection with electro coating treatment and tempered glass, stainless steel screws and silicone joints. Model for LED HI-POWER, 4000K colour temperature, CRI 80. With Spot optics. IP65, IK06 protection rating. Insulation class III. Control gear not included. Lifetime: 60. 000 L90B10. BUG Rate: B0 U0 G0, ULOR: 0%. Available finishes: anthracite and textured grey

Finish: Textured anthracite

Weight: 714 g

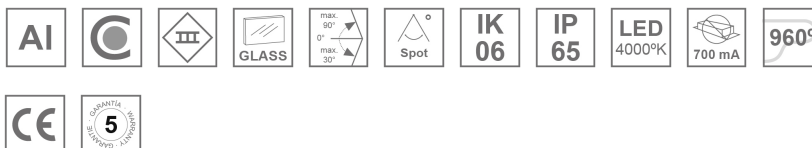


Installation: Surface

TECHNICAL SPECIFICATIONS:

Light output:	720 lm	°K :	4000
		CRI :	80
Type:	HIGH POWER LED	MacAdam:	3
LED Lifetime:	60.000 L90 B10 (Ta=25°C)	Power Supply:	700mA DC
Power:	6W	Gear:	Without gear (requires external gear)

Light output tolerance +/- 10%



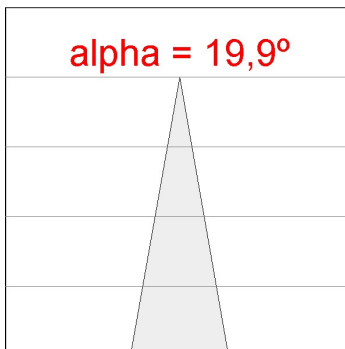
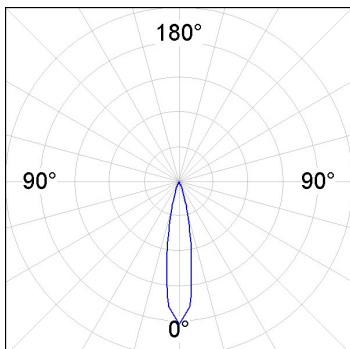
SHOT 80

MC209SP8400A

SHOT 80 G2 900 NW SP NO GEAR ANT.

PHOTOMETRIC DATA :

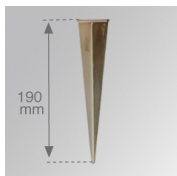
MC209SP8400A
 $\eta = 100\%$
 $I_{max} = 6135 \text{ cd/klm}$
 UTE:
 CIE: 99 100 100 100 100



H (m)	D (m)	E _{max}	E _{med}
1	0,35	4402	3175
2	0,70	1101	794
3	1,05	489	353
4	1,41	275	198

ACCESORIES :

Assembly



Product code:

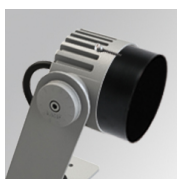
MCSPM

Description:

SHOT 80 G2 ACC. SPIKE

ACCESORIES :

Optical



Product code:

MCSC82B

Description:

SHOT 80 G2 ACC. ANTIGLARE SCREEN

ACCESORIES :

Adjustment and control



Product code:

9247940

Description:

ACC. DRIVER IP66 700MA 17W



Product code:

DRV6721700N

Description:

ACC. DRIVER IP67 700MA 21W