

SHOT 80

MC209SP830NA



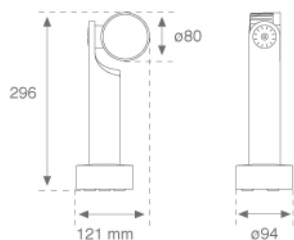
SHOT 80 G2 900 WW SP ANT.

Description:

Outdoor spotlight model SHOT 80 G2 900, LAMP brand. Made of lacquered aluminium injection with electro coating treatment and tempered glass, stainless steel screws and silicone joints. Model for LED HI-POWER, 3000K colour temperature, CRI 80 and control gear included. With Spot optics. IP65, IK06 protection rating. Insulation class II. Lifetime: 60. 000 L90B10. BUG Rate: B0 U0 G0, ULOR: 0%. Available finishes: anthracite and textured grey

Finish: Textured anthracite

Weight: 1.324 g

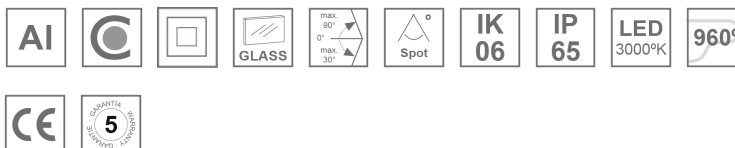


Installation: Surface

TECHNICAL SPECIFICATIONS:

Light output:	720 lm	°K :	3000
Plum:	9,4W	CRI :	80
Efficacy:	76,6 lm/w	MacAdam:	3
Type:	HIGH POWER LED	Power Supply:	220-240V 50/60Hz
LED Lifetime:	60.000 L90 B10 (Ta=25°C)	Gear:	Electronic
Power:	6W		

Light output tolerance +/- 10%



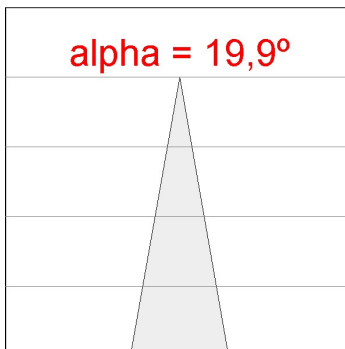
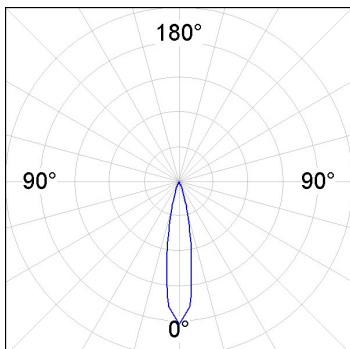
SHOT 80

MC209SP830NA

SHOT 80 G2 900 WW SP ANT.

PHOTOMETRIC DATA :

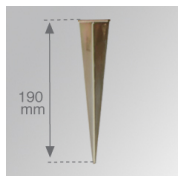
MC209SP830NA
 $\eta = 100\%$
 $I_{max} = 6135 \text{ cd/klm}$
 UTE:
 CIE: 99 100 100 100 100



H (m)	D (m)	E _{max}	E _{med}
1	0,35	4402	3175
2	0,70	1101	794
3	1,05	489	353
4	1,41	275	198

ACCESORIES :

Assembly



Product code:

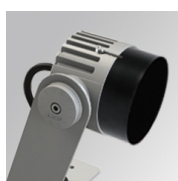
MCSPM

Description:

SHOT 80 G2 ACC. SPIKE

ACCESORIES :

Optical



Product code:

MCSC82B

Description:

SHOT 80 G2 ACC. ANTIGLARE SCREEN