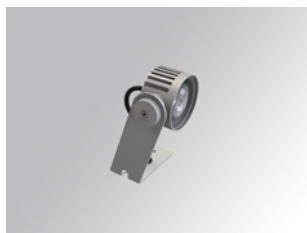


## SHOT 80

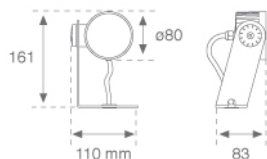
MC209MF8400G



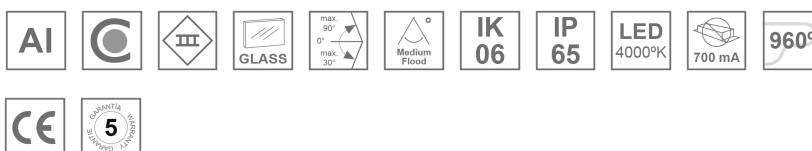
## SHOT 80 G2 900 NW MFL NO GEAR GR.

**Description:**

Outdoor spotlight model SHOT 80 G2 900 NO GEAR, LAMP brand. Made of lacquered aluminium injection with electro coating treatment and tempered glass, stainless steel screws and silicone joints. Model for LED HI-POWER, 4000K colour temperature, CRI 80. With Medium Flood optics. IP65, IK06 protection rating. Insulation class III. Control gear not included. Lifetime: 60.000 L90B10. BUG Rate: B0 U0 G0, ULOR: 0%. Available finishes: anthracite and textured grey

**Finish:** Texturised grey**Weight:** 714 g**Installation:** Surface**TECHNICAL SPECIFICATIONS:**

<b>Light output:</b>	609 lm	<b>°K :</b>	4000
		<b>CRI :</b>	80
<b>Type:</b>	HIGH POWER LED	<b>MacAdam:</b>	3
<b>LED Lifetime:</b>	60.000 L90 B10 (Ta=25°C)	<b>Power Supply:</b>	700mA DC
<b>Power:</b>	6W	<b>Gear:</b>	Without gear (requires external gear)

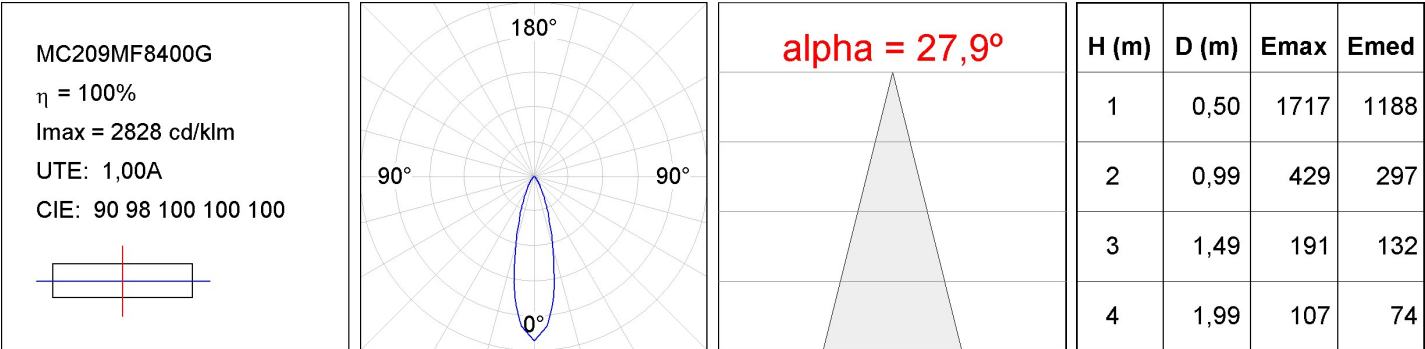
**Light output tolerance +/- 10%**

SHOT 80

MC209MF8400G

SHOT 80 G2 900 NW MFL NO GEAR GR.

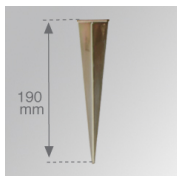
PHOTOMETRIC DATA :



---

**ACCESORIES :**

**Assembly**



**Product code:**

MCSPM

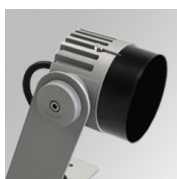
**Description:**

SHOT 80 G2 ACC. SPIKE

---

**ACCESORIES :**

**Optical**



**Product code:**

MCSC82B

**Description:**

SHOT 80 G2 ACC. ANTIGLARE SCREEN

---

**ACCESORIES :**

**Adjustment and control**



**Product code:**

9247940

**Description:**

ACC. DRIVER IP66 700MA 17W



**Product code:**

DRV6721700N

**Description:**

ACC. DRIVER IP67 700MA 21W