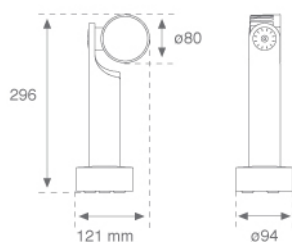


SHOT 80

MC209MF830NA



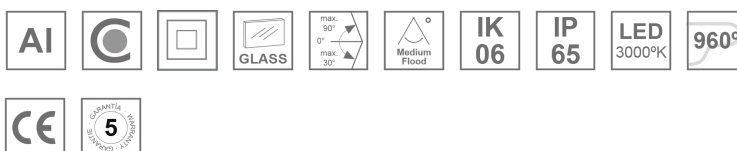
SHOT 80 G2 900 WW MFL ANT.

Description:

Outdoor spotlight model SHOT 80 G2 900, LAMP brand. Made of lacquered aluminium injection with electro coating treatment and tempered glass, stainless steel screws and silicone joints. Model for LED HI-POWER, 3000K colour temperature, CRI 80 and control gear included. With Medium Flood optics. IP65, IK06 protection rating. Insulation class II. Lifetime: 60. 000 L90B10. BUG Rate: B0 U0 G0, ULOR: 0%. Available finishes: anthracite and textured grey

Finish: Textured anthracite**Weight:** 1.324 g**Installation:** Surface**TECHNICAL SPECIFICATIONS:**

Light output:	609 lm	°K :	3000
Plum:	7W	CRI :	80
Efficacy:	87 lm/w	MacAdam:	3
Type:	HIGH POWER LED	Power Supply:	220-240V 50/60Hz
LED Lifetime:	60.000 L90 B10 (Ta=25°C)	Gear:	Electronic
Power:	6W		

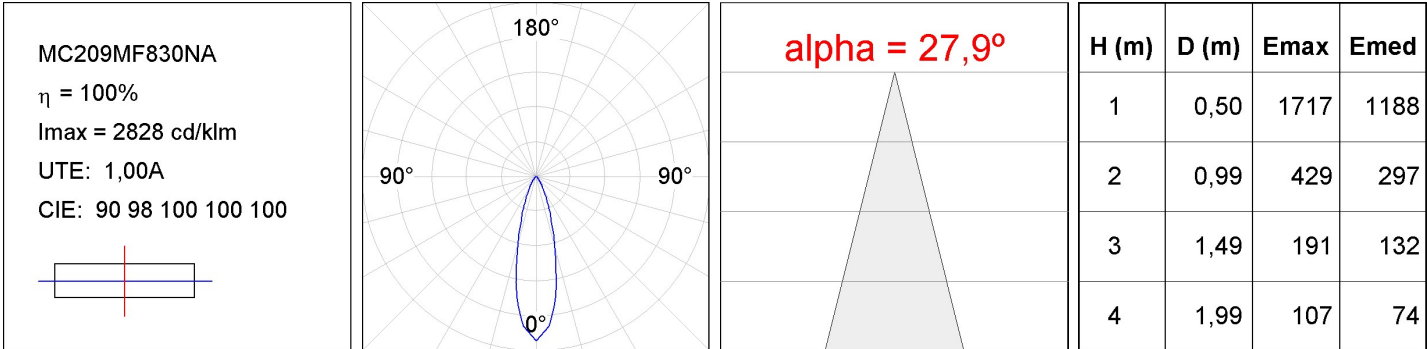
Light output tolerance +/- 10%

SHOT 80

MC209MF830NA

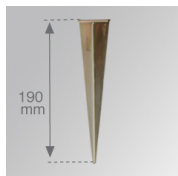
SHOT 80 G2 900 WW MFL ANT.

PHOTOMETRIC DATA :



ACCESORIES :

Assembly



Product code:

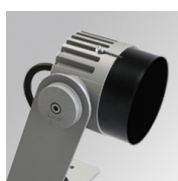
MCSPM

Description:

SHOT 80 G2 ACC. SPIKE

ACCESORIES :

Optical



Product code:

MCSC82B

Description:

SHOT 80 G2 ACC. ANTIGLARE SCREEN