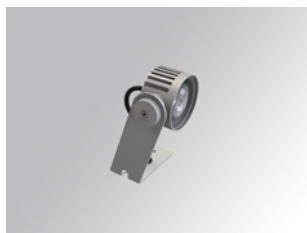


SHOT 80

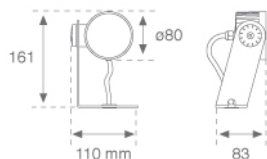
MC209MF8300G



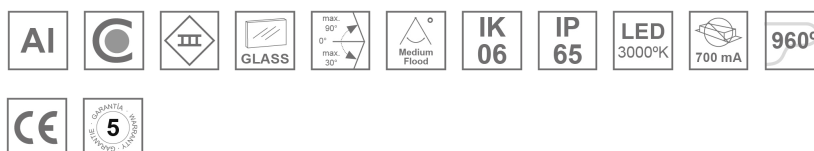
SHOT 80 G2 900 WW MFL NO GEAR GR.

Description:

Outdoor spotlight model SHOT 80 G2 900 NO GEAR, LAMP brand. Made of lacquered aluminium injection with electro coating treatment and tempered glass, stainless steel screws and silicone joints. Model for LED HI-POWER, 3000K colour temperature, CRI 80. With Medium Flood optics. IP65, IK06 protection rating. Insulation class III. Control gear not included. Lifetime: 60.000 L90B10. BUG Rate: B0 U0 G0, ULOR: 0%. Available finishes: anthracite and textured grey

Finish: Texturised grey**Weight:** 714 g**Installation:** Surface**TECHNICAL SPECIFICATIONS:**

Light output:	609 lm	°K :	3000
Type:	HIGH POWER LED	CRI :	80
LED Lifetime:	60.000 L90 B10 (Ta=25°C)	MacAdam:	3
Power:	6W	Power Supply:	700mA DC
		Gear:	Without gear (requires external gear)

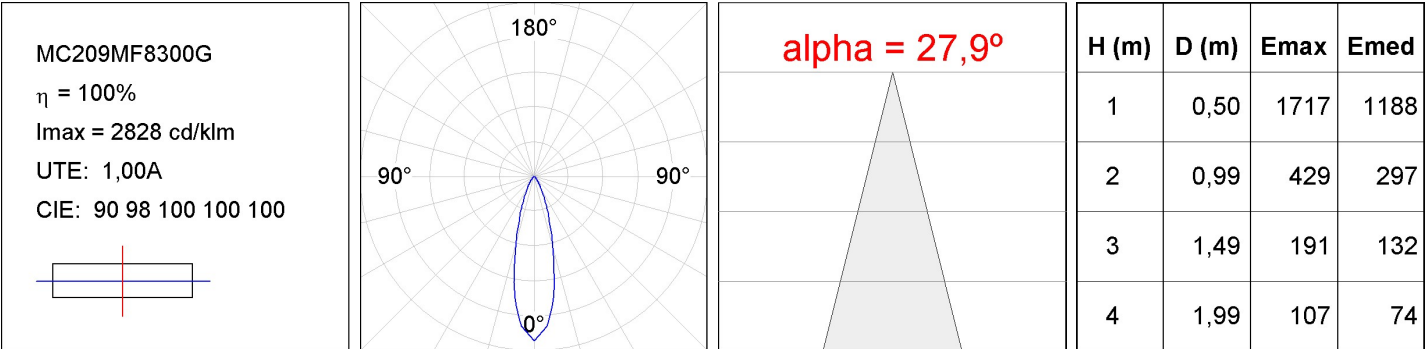
Light output tolerance +/- 10%

SHOT 80

MC209MF8300G

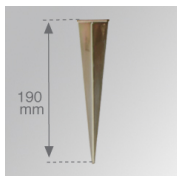
SHOT 80 G2 900 WW MFL NO GEAR GR.

PHOTOMETRIC DATA :



ACCESORIES :

Assembly



Product code:

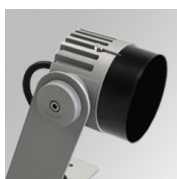
MCSPM

Description:

SHOT 80 G2 ACC. SPIKE

ACCESORIES :

Optical



Product code:

MCSC82B

Description:

SHOT 80 G2 ACC. ANTIGLARE SCREEN

ACCESORIES :

Adjustment and control



Product code:

9247940

Description:

ACC. DRIVER IP66 700MA 17W



Product code:

DRV6721700N

Description:

ACC. DRIVER IP67 700MA 21W