

LA1SF120LOOP840NW



LAMPTUB LED OPAL SUS 2600 NW WH.

Description:

Suspended or mounted surface luminaire model LAMPTUB LED OPAL SUS 2600 NW LAMP brand. Made of 80% recycled aluminium extrusion and length of 1162mm with opal polycarbonate diffuser. Model for LED MID-POWER with 4000K colour temperature, CRI80 and control gear included. IP20 protection rating. Insulation class I. Lifetime: 50000 L80 B10. Available finishes: White (RAL 9010)

Finish: Matte white RAL 9010

Dimensions: 1.162 x 0 x 0 mm

Weight: 2.388 g

Installation: Surface

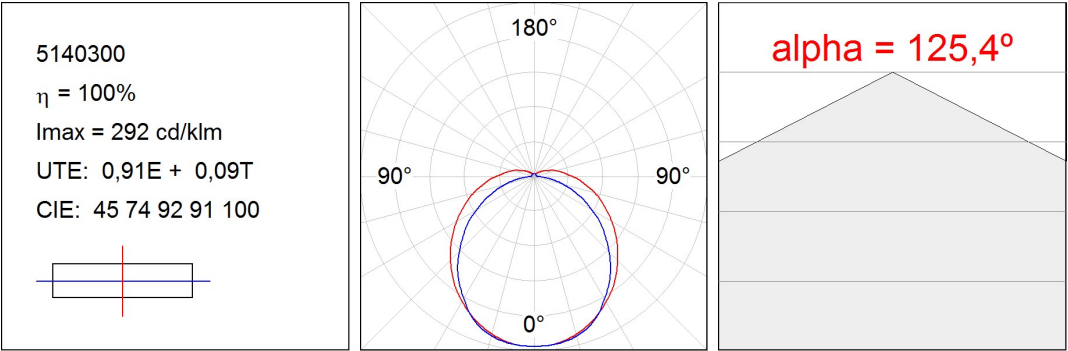
TECHNICAL SPECIFICATIONS:

Light output:	2.322 lm	°K :	4000
Plum:	19,2W	CRI :	80
Efficacy:	120,9 lm/w	MacAdam:	3
Type:	MID POWER LED	Power Supply:	220-240V 50/60Hz
LED Lifetime:	50.000 L80 B10 (Ta=25°C)	Gear:	Electronic
Power:	17W		

Light output tolerance +/- 10%

**CUSTOM MADE OPTIONS:**

PHOTOMETRIC DATA :



ACCESORIES :

Assembly



Product code:

5105210

Description:

LAMPTUB ACC. T JOINT WH.



Product code:

5105220

Description:

LAMPTUB ACC. X JOINT WH.



Product code:

5105260

Description:

LAMPTUB ACC. 8 POSITION JOINT WH.



Product code:

F5JO

Description:

ACC. INTM JOINT B



Product code:

LACOSUX/MMW

LAPRSUX/MMW

Description:

LAMPTUB ACC. COVER X/MM WH.

LAMPTUB ACC. PROFILE X/MM WH.



Product code:

LASUECW

Description:

LAMPTUB ACC. END COVER WH.



Product code:

LASUHCW

Description:

LAMPTUB ACC. 90° CORNER WH.

ACCESORIES :

Suspension



Product code:

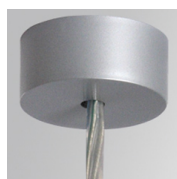
SFRG41G

SFRG41W

Description:

ACC. SUR FIXING NK.

ACC. SUR FIXING WH.



Product code:

SUCA4000DG

SUCA4000NG

Description:

ACC. ELEC 5P SUSP GR.

ACC. ELEC 3P SUSP GR.



Product code:

SUCA4000DW

SUCA4000NW

Description:

ACC. ELEC 5P SUSP WH.

ACC. ELEC 3P SUSP WH.



Product code:

SUCAEMDEG

Description:

ACC. ELECMEC SUR FIXING GR.



Product code:

SUCAEMDEW

Description:

ACC. ELECMEC SUR FIXING WH.



Product code:

SUCAEMFA1000NG

SUCAEMFA4000NG

Description:

ACC. ELECMEC QUICK SUSP 1M GR.

ACC. ELECMEC QUICK SUSP 4M GR.



Product code:

SUCAEMFA1000NW

SUCAEMFA4000NW

Description:

ACC. ELECMEC QUICK SUSP 1M WH.

ACC. ELECMEC QUICK SUSP 4M WH.



Product code:

SUCARG0100G

SUCARG0250G

SUCARG0500G

SUCARG1000G

Description:

ACC. ELECMEC RIGID SUSP 100MM GR.

ACC. ELECMEC RIGID SUSP 250MM GR.

ACC. ELECMEC RIGID SUSP 500MM GR.

ACC. ELECMEC RIGID SUSP 1000MM GR.



Product code:
SUCARG0100W
SUCARG0250W
SUCARG0500W
SUCARG1000W

Description:
ACC. ELECMEC RIGID SUSP 100MM WH.
ACC. ELECMEC RIGID SUSP 250MM WH.
ACC. ELECMEC RIGID SUSP 500MM WH.
ACC. ELECMEC RIGID SUSP 1000MM WH.



Product code:
SUCAWI1000DG
SUCAWI4000DG

Description:
ACC. ELECMEC QUICK SUSP 1M 5P GR.
ACC. ELECMEC QUICK SUSP 4M 5P GR.



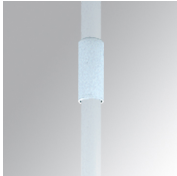
Product code:
SUCAWI1000DW
SUCAWI4000DW

Description:
ACC. ELECMEC QUICK SUSP 1M 5P WH.
ACC. ELECMEC QUICK SUSP 4M 5P WH.



Product code:
SURG0100W
SURG0250W
SURG0500W
SURG1000W

Description:
ACC. RIGID SUSP 100MM WH.
ACC. RIGID SUSP 250MM WH.
ACC. RIGID SUSP 500MM WH.
ACC. RIGID SUSP 1000MM WH.



Product code:
SURGJO41W

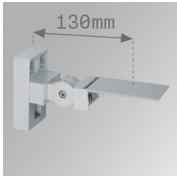
Description:
ACC. RIGID SUSP FIXING JOINT WH.



Product code:
SUWIDE1000G
SUWIDE4000G

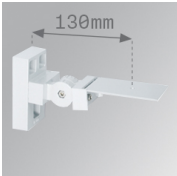
Description:
ACC. QUICK STEEL CABLE 1M NK.
ACC. QUICK STEEL CABLE 4M NK.

ACCESORIES :
Support



Product code:
ARRO13G

Description:
ACC. ADJ WALL ARM GR.



Product code:
ARRO13W

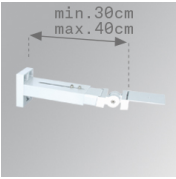
Description:
ACC. ADJ WALL ARM WH.

LAMPTUB



Product code:
ARROEX40G

Description:
ACC. ADJ EXTEN WALL ARM GR.



Product code:
ARROEX40W

Description:
ACC. ADJ EXTEN WALL ARM WH.



Product code:
F5FX75G
F5FX75W

Description:
ACC. WALL BRACKET 75MM GR.
ACC. WALL BRACKET 75MM WH.



Product code:
LAWASFEDW
LAWASFIDW

Description:
LAMPTUB ACC. FI WALL BRACKET WH.
LAMPTUB ACC. INTM WALL BRACKET WH.

ACCESORIES :
Optical



Product code:
LADIX/MMOP

Description:
LAMPTUB ACC. OPAL DIFFUSER X/MM