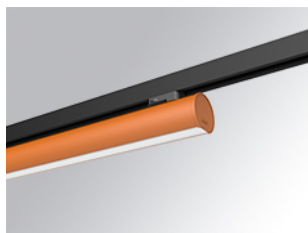


## LAMPTUB 60 SURFACE TRACK

L61TK112LOOP930N4



- LTUB60 TRACK 220 1120 1700 WW OPAL BS

**Description:**

Lamptub 60 model from LAMP to be installed on a surface-mounted rail. Made of recycled aluminium extrusion with circular section of 60mm and length of 1120mm, with opal polycarbonate diffuser. Model for MID-POWER LED, with colour temperature 3000K with CRI90. Built-in electronic ON/OFF control gear. With IP20, IK07 degree of protection. Insulation class II. Group 0 photobiological safety. Lifetime: 72.000h L80 B10. Compatible with Lamp Nomadic system. Available finishes: White (RAL 9010), Black (RAL 9011), Wellbeing and BeSocial palette.

**Finish:** Palette BE SOCIAL - 4 TEXTURED**Dimensions:** 1.127 x 67 x 112 mm**Weight:** 2.580 g**Installation:** 3-Circuit track**TECHNICAL SPECIFICATIONS:**

<b>Light output:</b>	1.005 lm	<b>°K :</b>	3000
<b>Plum:</b>	12,5W	<b>CRI :</b>	90
<b>Efficacy:</b>	80,4 lm/w	<b>R9 :</b>	64
<b>Type:</b>	MID POWER LED	<b>MacAdam:</b>	3
<b>LED Lifetime:</b>	50.000 L90 B10 (Ta=25°C)	<b>Power Supply:</b>	220-240V 50/60Hz
<b>Power:</b>	10.6W	<b>Gear:</b>	Electronic

**Light output tolerance +/- 10%****CUSTOM MADE OPTIONS:**

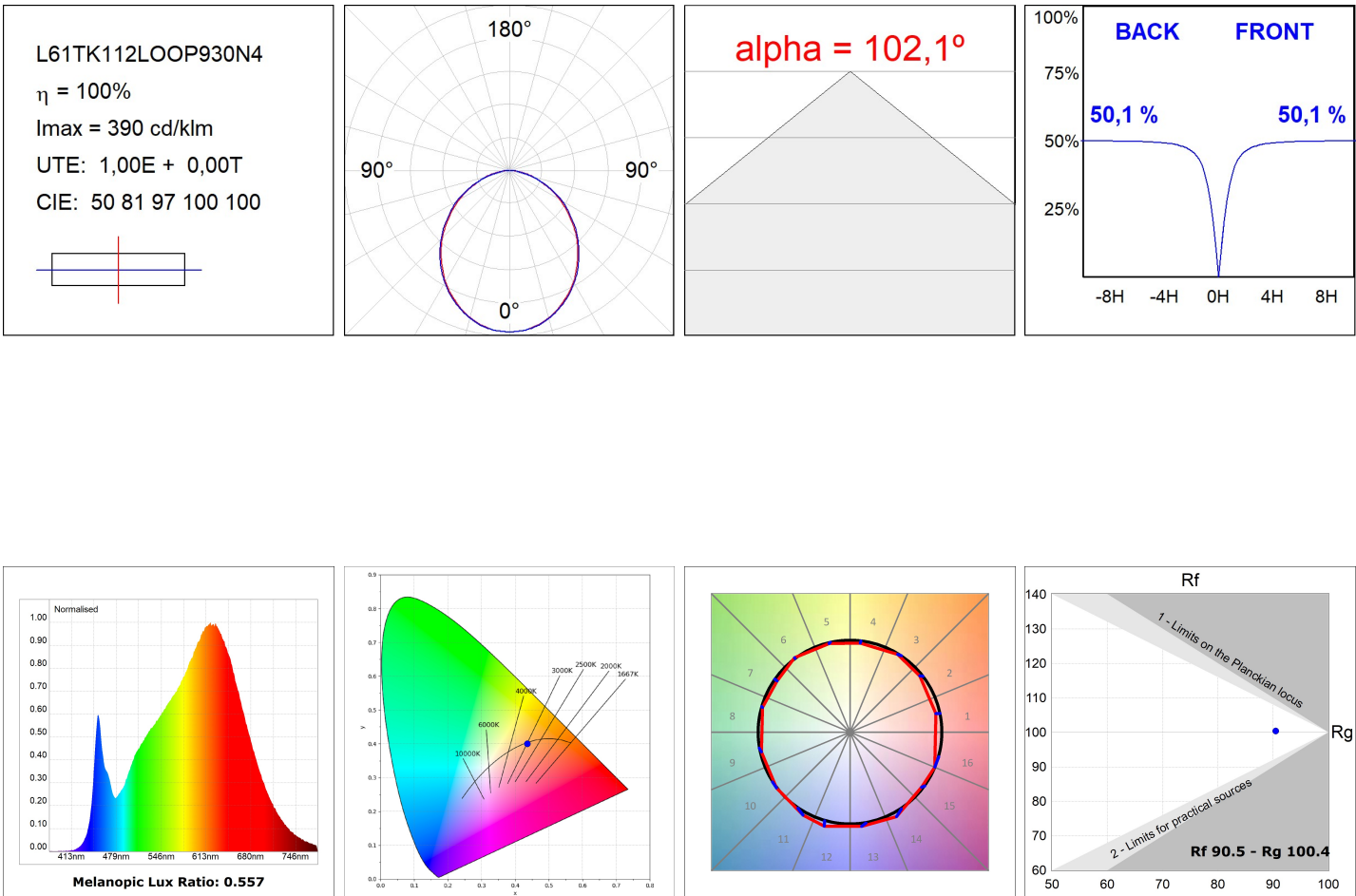
LAMPTUB 60 SURFACE TRACK



L61TK112LOOP930N4

LTUB60 TRACK 220 1120 1700 WW OPAL BS

PHOTOMETRIC DATA :



ACCESORIES :

Assembly



**Product code:**  
L6SUECB

**Description:**  
LTUB60 ACC. SUR END COVER BK.



**Product code:**  
L6SUECW

**Description:**  
LTUB60 ACC. SUR END COVER WH.



**Product code:**  
L6SUECW3

**Description:**  
LTUB60 ACC. SUR END COVER WE.



**Product code:**  
L6SUECW4

**Description:**  
LTUB60 ACC. SUR END COVER BS.