

LAMP TUB 60 SURFACE TRACK

L61TK084MOOC9TWDB



LTUB60 TRACK 220 840 2400 TW COMF DA BK

Description:

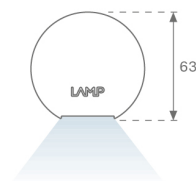
Lamptub 60 model from LAMP to be installed on a surface-mounted rail. Made of recycled aluminium extrusion with circular section of 60mm and length of 840mm, an opal comfort diffuser made of a translucent polycarbonate diffuser and an optical film to achieve a controlled light distribution and low UGR<19. Model for MID-POWER LED, with TW colour temperature with CRI90. Built-in electronic DALI control gear. With IP20, IK07 degree of protection. Insulation class II. Group 0 photobiological safety. Lifetime: 50.000h L90 B10. Compatible with Lamp Nomadic system. Available finishes: White (RAL 9010), Black (RAL 9011), Wellbeing and BeSocial palette.

Finish: Matte black RAL 9011

Dimensions: 847 x 67 x 112 mm

Weight: 2.060 g

Installation: Suspended



TECHNICAL SPECIFICATIONS:

Light output:	1.397 lm	°K :	TW
Plum:	17,9W	CRI :	90
Efficacy:	78 lm/w	MacAdam:	3
UGR:	<19	Power Supply:	220-240V 50/60Hz
Type:	MID POWER LED	Gear:	Adjustable DALI DT8
LED Lifetime:	50.000 L80 B10 (Ta=25°C)		
Power:	13.9W		

Light output tolerance +/- 10%



CUSTOM MADE OPTIONS:

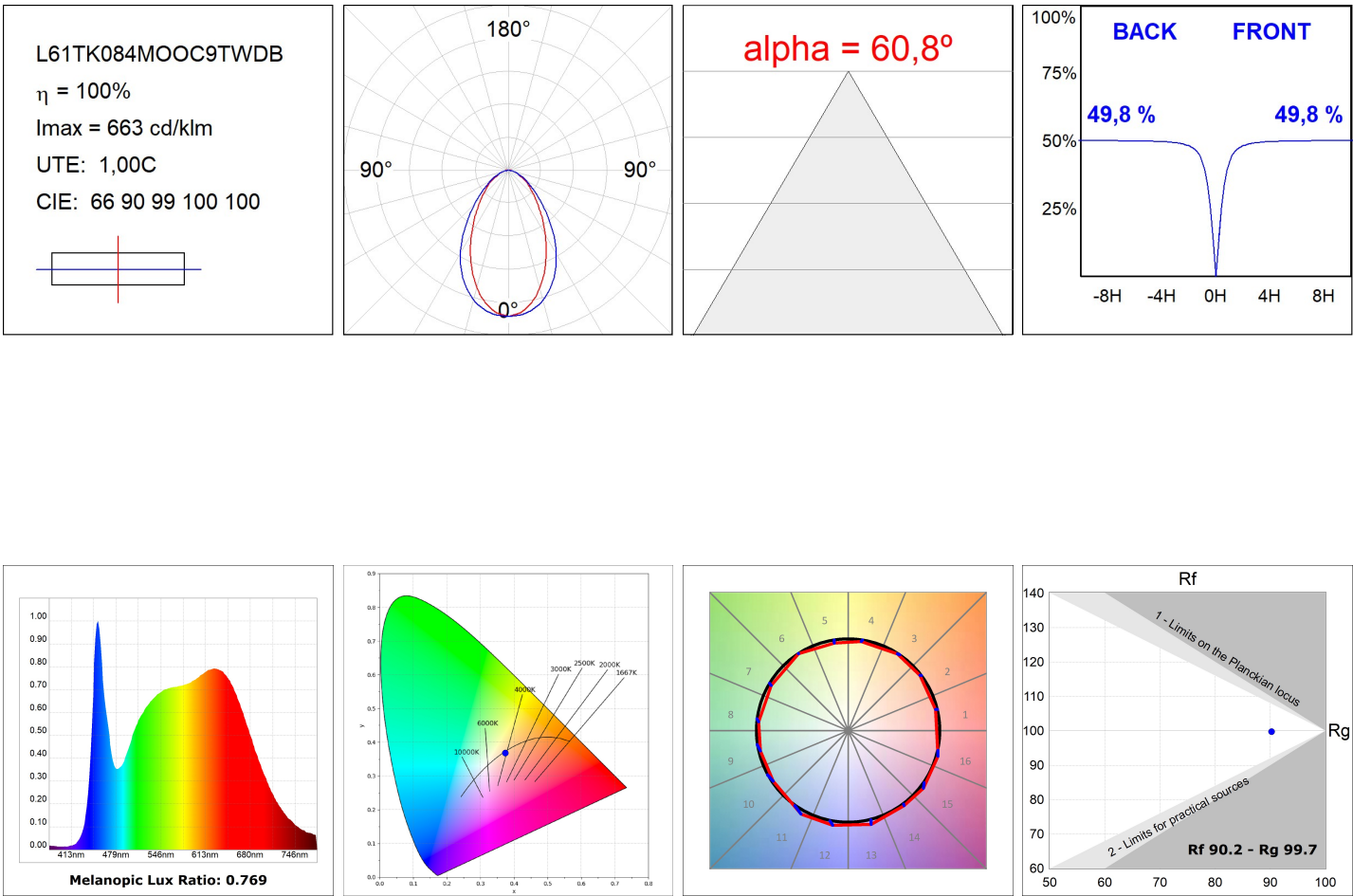


LAMPTUB 60 SURFACE TRACK

L61TK084MOOC9TWDB

LTUB60 TRACK 220 840 2400 TW COMF DA BK

PHOTOMETRIC DATA :



ACCESORIES :

Assembly



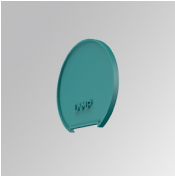
Product code:
L6SUECB

Description:
LTUB60 ACC. SUR END COVER BK.



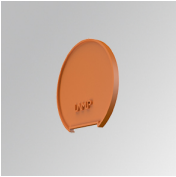
Product code:
L6SUECW

Description:
LTUB60 ACC. SUR END COVER WH.



Product code:
L6SUECW3

Description:
LTUB60 ACC. SUR END COVER WE.



Product code:
L6SUECW4

Description:
LTUB60 ACC. SUR END COVER BS.