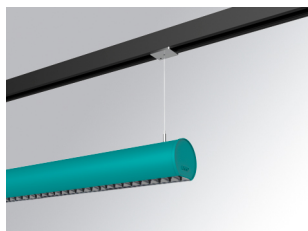


# LAMPTUB 60 SUSPENDED TRACK

L61ST168MOTE930N3



- LTUB60 SUT 1680 4400 9WW TECH WE

**Description:**

""""""Luminaire to be installed on a suspended rail, model LAMPTUB 60 TECH by LAMP. Made of 80% recycled aluminium extrusion, with circular section of 60mm and length 1680mm, with matt black reflector ULTRA COMFORT and optics for light distribution control and low glare UGR<16. Model for MID-POWER LED, with colour temperature 3000K and CRI90. Built-in electronic wiring. With IP20, IK07 degree of protection. Insulation class II. Photobiological safety group 0. Lifetime:50000 L90 B10 Available finishes: White (RAL 9010), Black (RAL 9011), Wellbeing and BeSocial palette. Compatible with Lamp Nomadic system. "" "

**Finish:** Palette WELLBEING - 3 TEXTURED

**Dimensions:** 1.680 x 67 x 80 mm



**Installation:** Suspended

**TECHNICAL SPECIFICATIONS:**

<b>Light output:</b>	2.520 lm	<b>°K :</b>	3000
<b>Plum:</b>	26,7W	<b>CRI :</b>	90
<b>Efficacy:</b>	94,4 lm/w	<b>R9 :</b>	61
<b>UGR:</b>	<16	<b>MacAdam:</b>	3
<b>Type:</b>	MID POWER LED	<b>Power Supply:</b>	220-240V 50/60Hz
<b>LED Lifetime:</b>	50.000 L90 B10 (Ta=25°C)	<b>Gear:</b>	Electronic
<b>Power:</b>	22W		

*Light output tolerance +/- 10%*

**CUSTOM MADE OPTIONS:**

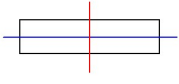
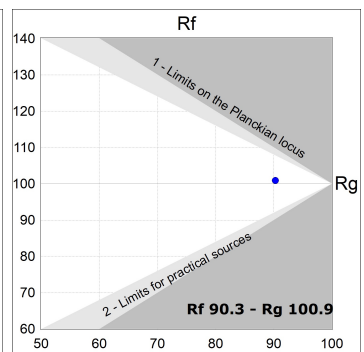
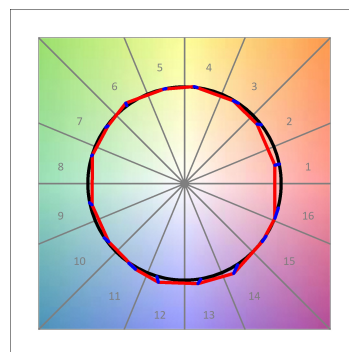
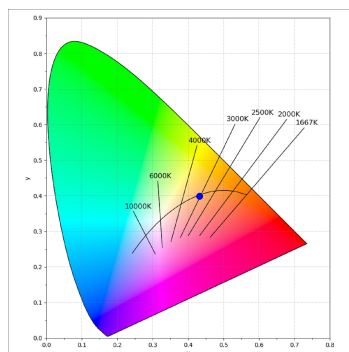
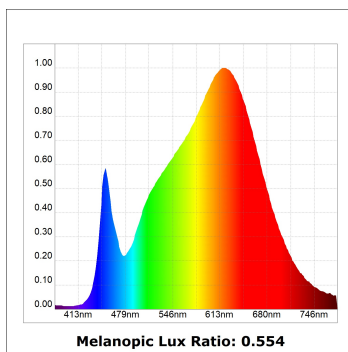
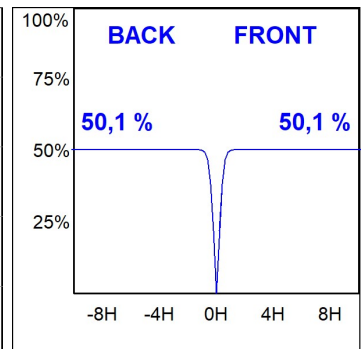
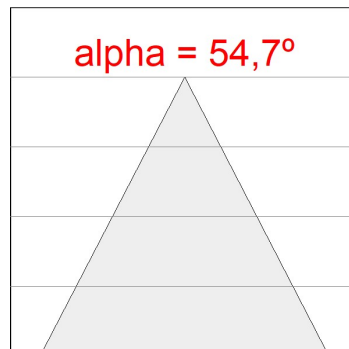
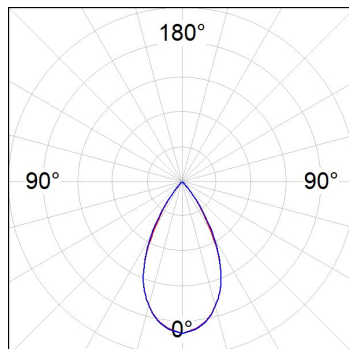


L61ST168MOTE930N3

LTUB60 SUT 1680 4400 9WW TECH WE

PHOTOMETRIC DATA :

L61ST168MOTE930N3  
 $\eta = 100\%$   
 $I_{max} = 1305 \text{ cd/klm}$   
 UTE:  
 CIE: 98 100 100 100 100

ACCESORIES :

Assembly



**Product code:**  
L6SUECB

**Description:**  
LTUB60 ACC. SUR END COVER BK.



**Product code:**  
L6SUECW

**Description:**  
LTUB60 ACC. SUR END COVER WH.



**Product code:**  
L6SUECW3

**Description:**  
LTUB60 ACC. SUR END COVER WE.



**Product code:**  
L6SUECW4

**Description:**  
LTUB60 ACC. SUR END COVER BS.