

L61SS112MOTE940NW



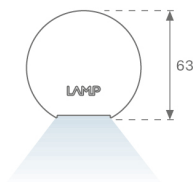
LTUB60 SU SF 1120 2960 9NW TECH WH

**Description:**

Surface-mounted luminaire, model LAMP TUB 60 TECH by LAMP. Made of 80% recycled aluminium extrusion, with circular section of 60mm and length 1120 mm, with matt black reflector ULTRA COMFORT and optics for light distribution control and low glare UGR<16. Model for MID-POWER LED, with colour temperature 4000K and CRI90. Built-in electronic wiring. With IP20, IK07 degree of protection. Insulation class I/II. Photobiological safety group 0. Lifetime:50000 L90 B10 Available finishes: White (RAL 9010), Black (RAL 9011), Wellbeing and BeSocial palette.

**Finish:** Matte white RAL 9010

**Dimensions:** 1.120 x 67 x 80 mm



**Installation:** Suspended

**TECHNICAL SPECIFICATIONS:**

<b>Light output:</b>	1.760 lm	<b>°K :</b>	4000
<b>Plum:</b>	17,8W	<b>CRI :</b>	90
<b>Efficacy:</b>	98,9 lm/w	<b>R9 :</b>	85
<b>UGR:</b>	<16	<b>MacAdam:</b>	3
<b>Type:</b>	MID POWER LED	<b>Power Supply:</b>	220-240V 50/60Hz
<b>LED Lifetime:</b>	50.000 L90 B10 (Ta=25°C)	<b>Gear:</b>	Electronic
<b>Power:</b>	14W		

*Light output tolerance +/- 10%*



**CUSTOM MADE OPTIONS:**




L61SS112MOTE940NW

LTUB60 SU SF 1120 2960 9NW TECH WH

PHOTOMETRIC DATA :

L61SS112MOTE940NW  
 $\eta = 100\%$   
 $I_{max} = 1333 \text{ cd/klm}$   
 UTE:  
 CIE: 98 100 100 100 100




ACCESORIES :

Assembly



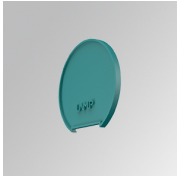
**Product code:**  
L6SUECB

**Description:**  
LTUB60 ACC. SUR END COVER BK.



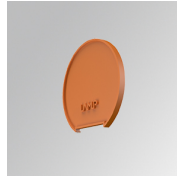
**Product code:**  
L6SUECW

**Description:**  
LTUB60 ACC. SUR END COVER WH.



**Product code:**  
L6SUECW3

**Description:**  
LTUB60 ACC. SUR END COVER WE.



**Product code:**  
L6SUECW4

**Description:**  
LTUB60 ACC. SUR END COVER BS.