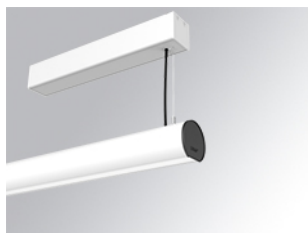


## LAMP TUB 60 SURF. CEILING ROSE

L61SS084LOOP940NW

- LTUB60 SU SF 840 1300 NW OPAL WH

**Description:**

Surface mounted luminaire Lamptub 60 from LAMP. Made of recycled aluminium extrusion with circular section of 60mm and length of 840mm, with opal polycarbonate diffuser. Model for MID-POWER LED, with colour temperature 4000K with CRI90. Built-in electronic ON/OFF control gear. With IP40, IK07 degree of protection. Insulation class I / II. Group 0 photobiological safety. Lifetime: 72.000h L80 B10. Compatible with Lamp Nomadic system. Available finishes: White (RAL 9010), Black (RAL 9011), Wellbeing and BeSocial palette.

**Finish:** Matte white RAL 9010**Installation:** Suspended**TECHNICAL SPECIFICATIONS:**

|                      |                          |                      |                  |
|----------------------|--------------------------|----------------------|------------------|
| <b>Light output:</b> | 778 lm                   | <b>°K :</b>          | 4000             |
| <b>Plum:</b>         | 9,7W                     | <b>CRI :</b>         | 90               |
| <b>Efficacy:</b>     | 80,2 lm/w                | <b>R9 :</b>          | 70               |
| <b>Type:</b>         | MID POWER LED            | <b>MacAdam:</b>      | 3                |
| <b>LED Lifetime:</b> | 72.000 L80 B10 (Ta=25°C) | <b>Power Supply:</b> | 220-240V 50/60Hz |
| <b>Power:</b>        | 8.5W                     | <b>Gear:</b>         | Electronic       |

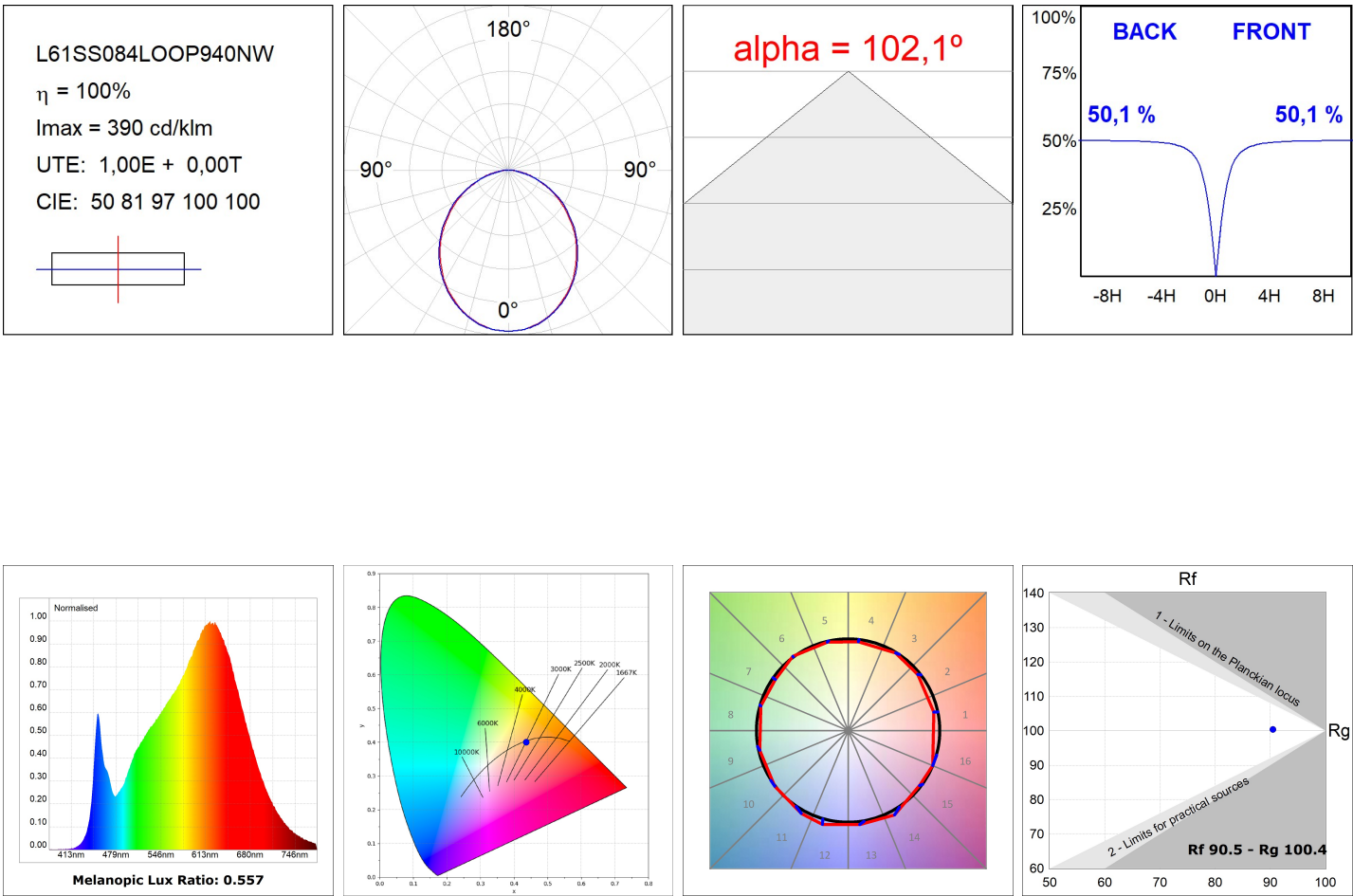
**Light output tolerance +/- 10%****CUSTOM MADE OPTIONS:**

LAMPTUB 60 SURF. CEILING ROSE

L61SS084LOOP940NW

LTUB60 SU SF 840 1300 NW OPAL WH

PHOTOMETRIC DATA :



ACCESORIES :

Assembly



**Product code:**

L6SUECB

**Description:**

LTUB60 ACC. SUR END COVER BK.



**Product code:**

L6SUECW

**Description:**

LTUB60 ACC. SUR END COVER WH.



**Product code:**

L6SUECW3

**Description:**

LTUB60 ACC. SUR END COVER WE.



**Product code:**

L6SUECW4

**Description:**

LTUB60 ACC. SUR END COVER BS.