

## KOMBIC 70 DOWNLIGHT

K711544OP930DWW



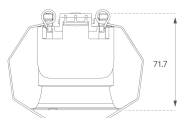
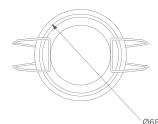
## KOMBIC 70 1500 IP44 9WW OPAL DA WH/WH

## Description:

KOMBIC 70 round recessed downlight by LAMP. Reflector made of recycled polycarbonate R-PC FR WHITE TM non-brominated flame retardant additive. Flammability grade V0 according to UL94. Inner reflector finished in white and opal optical sheet. Heatsink made of die-cast aluminium with black finish. COB LED, colour temperature 3000K with CRI90. Luminaire with electronic wiring Dali included. Insulation class II. LED life time: 66000 L90 B10. With IP44 degree of protection. Group 0 photobiological safety.

Finish: Matte white RAL 9010

Weight: 190 g

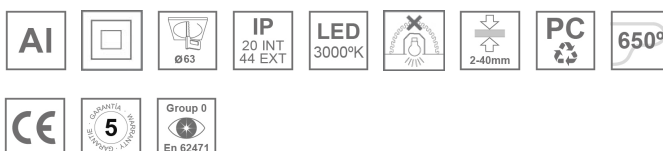


Installation: Recessed

## TECHNICAL SPECIFICATIONS:

Light output:	796 lm	°K :	3000
Plum:	9,5W	CRI :	90
Efficacy:	83,8 lm/w	R9 :	54
Type:	COB	MacAdam:	3
LED Lifetime:	66.000 L90 B10 (Ta=25°C)	Power Supply:	220-240V 50/60Hz
Power:	8,4W	Gear:	Adjustable DALI

Light output tolerance +/- 10%



## CUSTOM MADE OPTIONS:



KOMBIC 70 DOWNLIGHT

K711544OP930DWW

KOMBIC 70 1500 IP44 9WW OPAL DA WH/WH

PHOTOMETRIC DATA :

