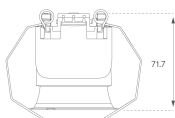
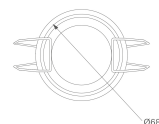


KOMBIC 70 DOWNLIGHT

K711523WF840NBB



KOMBIC 70 1500 IP43 NW WFL BK/BK

Description:

KOMBIC 70 round recessed downlight by LAMP. Reflector made of recycled polycarbonate R-PC FR WHITE TM non-brominated flame retardant additive. Flammability grade V0 according to UL94. Inner reflector finished in black. Heatsink made of die-cast aluminium with black finish. COB LED, colour temperature 4000K with CRI80. Luminaire with electronic wiring included. Insulation class II. LED life time: 100.000 L90 B10. With IP43 degree of protection. Group 0 photobiological safety. Optic Wide Flood to achieve a controlled light distribution and low UGR <19

Finish: Matte black RAL 9011

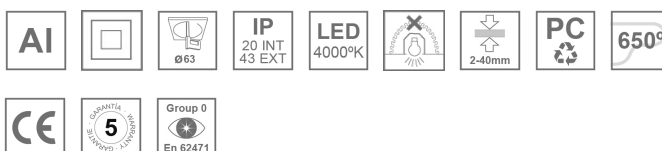
Weight: 190 g

Installation: Recessed

TECHNICAL SPECIFICATIONS:

Light output:	1.107 lm	°K :	4000
Plum:	10W	CRI :	80
Efficacy:	110,7 lm/w	MacAdam:	3
UGR:	<19	Power Supply:	220-240V 50/60Hz
Type:	COB	Gear:	Electronic
LED Lifetime:	100.000h L90 B10 (Ta=25°C)		
Power:	8,4W		

Light output tolerance +/- 10%



CUSTOM MADE OPTIONS:



KOMBIC 70 DOWNLIGHT

K711523WF840NBB

KOMBIC 70 1500 IP43 NW WFL BK/BK

PHOTOMETRIC DATA :

