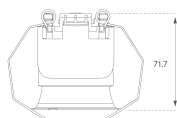
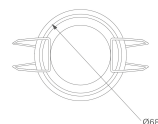
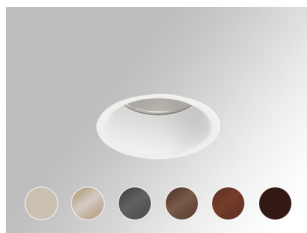


KOMBIC 70 DOWNLIGHT

K711523RW927N66



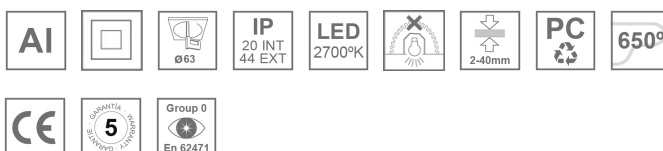
KOMBIC 70 1500 IP23 927 RF WFL SER

Description:

Recessed round downlight model KOMBIC 70. R-PC FR WHITE tm recycled polycarbonate reflector with bromine-free flame retardant. Flammability degree V0 according to UL94. Wide reflector for greater efficiency and control of light distribution and glare reduction UGR<16 Aluminum injection heatsink, with a black finish. COB LED, with 2700K color temperature with CRI90. Electronic equipment ON OFF included. With an IP23 degree of protection. Insulation class II. Photobiological safety group 0. Lifespan: 72,000 L80 B10. Available finish SERENA palette (Arena, Bronze, Champagne, Dark Chocolate, Dark Grey, Terracotta). Luminous flux tolerance $\pm 4\%$ depending on the finish.

Finish: SERENA Palette**Weight:** 190 g**Installation:** Recessed**TECHNICAL SPECIFICATIONS:**

Light output:	765 lm	°K :	2700
Plum:	10W	CRI :	90
Efficacy:	76,5 lm/w	R9 :	57
UGR:	<16	MacAdam:	3
Type:	COB	Power Supply:	220-240V 50/60Hz
LED Lifetime:	66.000 L90 B10 (Ta=25°C)	Gear:	Electronic
Power:	8,4W		

Light output tolerance $\pm 10\%$ **CUSTOM MADE OPTIONS:**