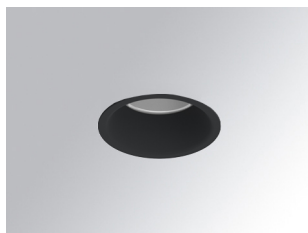


# KOMBIC 70 DOWNLIGHT

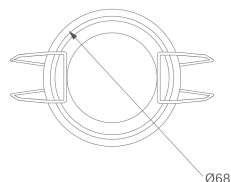
K711523EL830NBB



## KOMBIC 70 1500 IP23 WW ELI. BK/BK

### Description:

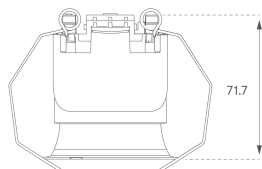
KOMBIC 70 round recessed downlight by LAMP. Reflector made of recycled polycarbonate R-PC FR WHITE TM non-brominated flame retardant additive. Flammability grade V0 according to UL94. Inner reflector finished in black. Elliptical optic option is the perfect choice for lighting walkways and longitudinal areas such as counters or areas adjacent to work areas. This product allows for increased spacing between luminaires, reducing the effect of residual light on walls and providing a pleasant atmosphere in the space. Heatsink made of die-cast aluminium with black finish. LED COB, colour temperature 3000K with IRC80. Luminaire with electronic wiring included. Insulation class II. LED life time: 66000 L90 B10. With IP23 degree of protection. Group 0 photobiological safety.



**Finish:** Matte black RAL 9011

**Weight:** 190 g

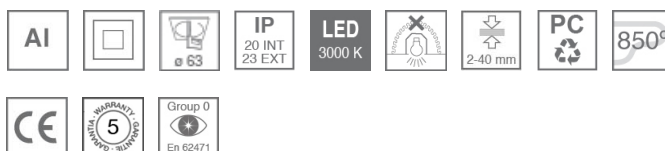
**Installation:** Recessed



### TECHNICAL SPECIFICATIONS:

<b>Light output:</b>	805 lm	<b>°K :</b>	3000
<b>Plum:</b>	9,5W	<b>CRI :</b>	80
<b>Efficacy:</b>	84,7 lm/w	<b>MacAdam:</b>	3
<b>Type:</b>	COB	<b>Power Supply:</b>	220-240V 50/60Hz
<b>LED Lifetime:</b>	66.000 L90 B10 (Ta=25°C)	<b>Gear:</b>	Electronic
<b>Power:</b>	8,4W		

*Light output tolerance +/- 10%*



### CUSTOM MADE OPTIONS:



# KOMBIC 70 DOWNLIGHT

K711523EL830NBB

KOMBIC 70 1500 IP23 WW ELI. BK/BK

## PHOTOMETRIC DATA :

K711523EL830NBB  
 $\eta = 100\%$   
 $I_{max} = 2239 \text{ cd/klm}$   
UTE: 1,00A  
CIE: 96 100 100 100 100

