

## KOMBIC 200 DOWNLIGHT

K32SQ4040OP840DWW

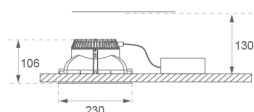


## KOMBIC 200 G2 SQ 4000 IP44 NW OP DA W/W

## Description:

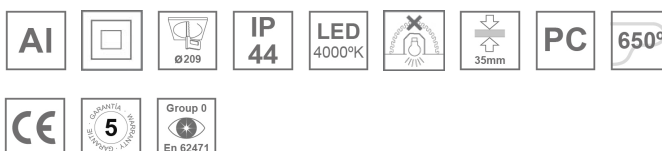
Round recessed downlight KOMBIC 200 G2 SQ 4000 Reflector made of recycled polycarbonate. Inner reflector finished in white. Elliptical optic option is the perfect choice for lighting walkways and longitudinal areas such as counters or areas adjacent to work areas. This product allows for increased spacing between luminaires, reducing the effect of residual light on walls and providing a pleasant atmosphere in the space. Heatsink made of die-cast aluminium with black finish. COB LED, colour temperature 4000K and CRI80. Electronic DALI gear included. IP44 rated. Insulation Class II. Photobiological safety group 0. LED life time: 60.000 L80 B10. Available finish: White. Environmental Product Declaration - EPD@available, according to UNE-EN ISO 9001:2015 and UNE-EN ISO 14001:2015.

**Finish:** Shiny white RAL 9010

**Weight:** 862 g

**Installation:** Recessed

## TECHNICAL SPECIFICATIONS:

<b>Light output:</b>	2.951 lm	<b>°K :</b>	4000
<b>Plum:</b>	24,1W	<b>CRI :</b>	80
<b>Efficacy:</b>	122,4 lm/w	<b>MacAdam:</b>	3
<b>Type:</b>	COB	<b>Power Supply:</b>	220-240V 50/60Hz
<b>LED Lifetime:</b>	71.000 L80 B10 (Ta=25°C)	<b>Gear:</b>	Adjustable DALI2
<b>Power:</b>	21,5W		

*Light output tolerance +/- 10%*


## CUSTOM MADE OPTIONS:

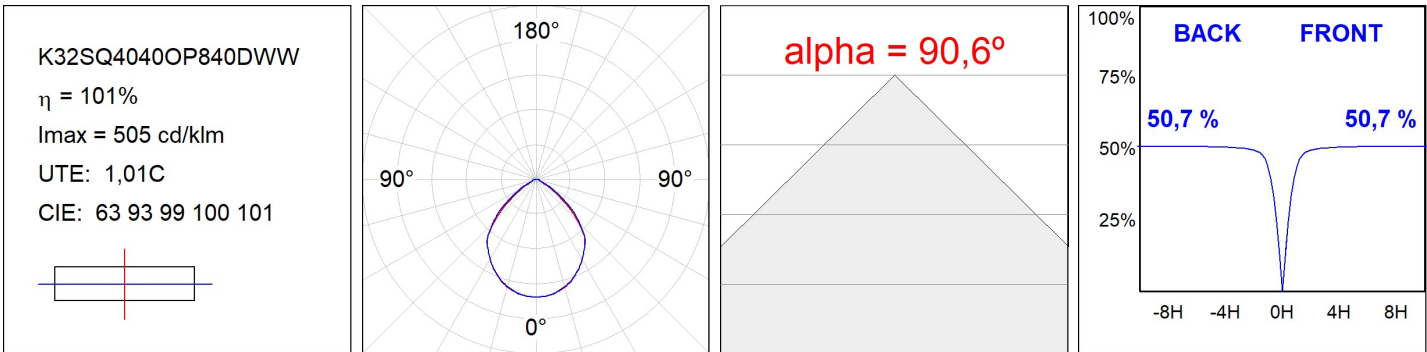


KOMBIC 200 DOWNLIGHT

K32SQ4040OP840DWW

KOMBIC 200 G2 SQ 4000 IP44 NW OP DA W/W

PHOTOMETRIC DATA :



## ACCESORIES :

### Assembly



**Product code:**

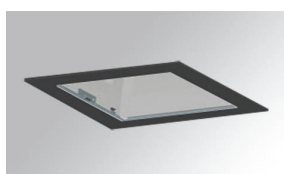
BORE404

**Description:**

DOMO SQ/KOMBIC SQ ACC. REC BOX

## ACCESORIES :

### Optical



**Product code:**

DITRSQ240B

**Description:**

DOMO SQ/KOMBIC SQ ACC. TRANSP GLASS BK.

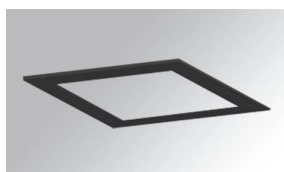


**Product code:**

DITRSQ240W

**Description:**

DOMO SQ/KOMBIC SQ ACC. TRANSP GLASS WH.



**Product code:**

FRSQ235B

**Description:**

DOMO SQ/KOMBIC SQ ACC. DECO FRAME BK.



**Product code:**

FRSQ235W

**Description:**

DOMO SQ/KOMBIC SQ ACC. DECO FRAME WH.