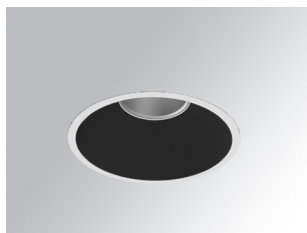


## KOMBIC 150 DOWNLIGHT

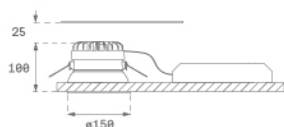
K21RD3523RW830NBW



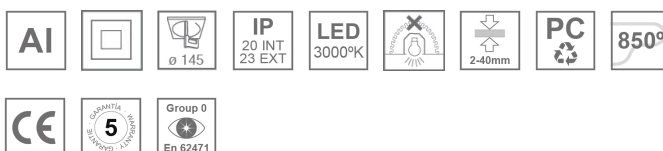
KOMBIC 150 RD 3700 IP23 WW RF WF BK/WH

**Description:**

Round recessed downlight model KOMBIC 150 RD by Lamp brand. Reflector made of recycled polycarbonate R-PC FR WHITE TM non-brominated flame retardant additive. Flammability grade V0 according to UL94. Black interior reflector and frame in white finish. Heatsink made of die-cast aluminium. COB LED, colour temperature 3000K with CRI80. Luminaire with electronic wiring included. Insolation Class II. Lifetime: 66.000 L80 B10. With IP23 degree of protection. Group 0 photobiological safety. Reflector aluminium Wide Flood to achieve a controlled light distribution and low UGR<19.

**Finish:** Matte black RAL 9011**Weight:** 704 g**Installation:** Recessed**TECHNICAL SPECIFICATIONS:**

<b>Light output:</b>	3.239 lm	<b>°K :</b>	3000
<b>Plum:</b>	28,3W	<b>CRI :</b>	80
<b>Efficacy:</b>	114,5 lm/w	<b>MacAdam:</b>	3
<b>UGR:</b>	<19	<b>Power Supply:</b>	220-240V 50/60Hz
<b>Type:</b>	COB	<b>Gear:</b>	Electronic
<b>LED Lifetime:</b>	66.000 L80 B10 (Ta=25°C)		
<b>Power:</b>	25W		

**Light output tolerance +/- 10%****CUSTOM MADE OPTIONS:**

KOMBIC 150 DOWNLIGHT

K21RD3523RW830NBW

KOMBIC 150 RD 3700 IP23 WW RF WF BK/WH

PHOTOMETRIC DATA :

