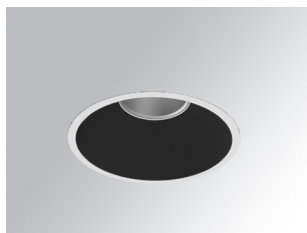


KOMBIC 150 DOWNLIGHT

K21RD3523RF830NBW



KOMBIC 150 RD 3700 IP23 WW RF FL BK/WH

Description:

Round recessed downlight model KOMBIC 150 RD by Lamp brand. Reflector made of recycled polycarbonate R-PC FR WHITE TM non-brominated flame retardant additive. Flammability grade V0 according to UL94. Black interior reflector and frame in white finish. Heatsink made of die-cast aluminium. COB LED, colour temperature 3000K with CRI80. Luminaire with electronic wiring included. Insolation Class II. Lifetime: 66.000 L80 B10. With IP23 degree of protection. Group 0 photobiological safety. Reflector aluminium Flood to achieve a controlled light distribution and low UGR<19.

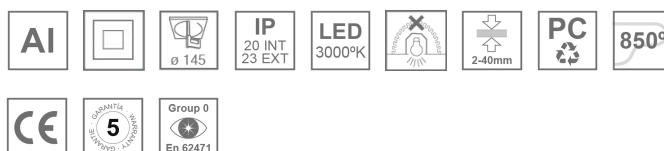
Finish: Matte black RAL 9011

Weight: 704 g

Installation: Recessed

TECHNICAL SPECIFICATIONS:

| | | | |
|----------------------|--------------------------|----------------------|------------------|
| Light output: | 3.223 lm | °K : | 3000 |
| Plum: | 28,3W | CRI : | 80 |
| Efficacy: | 113,9 lm/w | MacAdam: | 3 |
| UGR: | <19 | Power Supply: | 220-240V 50/60Hz |
| Type: | COB | Gear: | Electronic |
| LED Lifetime: | 66.000 L80 B10 (Ta=25°C) | | |
| Power: | 25W | | |

Light output tolerance +/- 10%


CUSTOM MADE OPTIONS:



KOMBIC 150 DOWNLIGHT

K21RD3523RF830NBW

KOMBIC 150 RD 3700 IP23 WW RF FL BK/WH

PHOTOMETRIC DATA :

