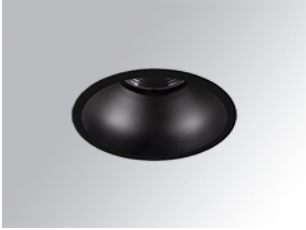


KOMBIC 150 DOWNLIGHT

K21RD3040EL927DBB



KOMBIC 150 RD 3400 IP43 9VWW EL DA BK/BK

Description:

LAMP Round recessed downlight KOMBIC 150 RD 3400 . Reflector made of recycled polycarbonate R-PC FR WHITE TM non-brominated flame retardant additive. Flammability grade V0 according to UL94. Elliptical optic option is the perfect choice for lighting walkways and longitudinal areas such as counters or areas adjacent to work areas. This product allows for increased spacing between luminaires, reducing the effect of residual light on walls and providing a pleasant atmosphere in the space.Heatsink made of die-cast aluminium with black finish. COB LED, colour temperature 4000K and CRI80. Electronic DALI gear included. IP44 rated. Insulation Class II. Photobiological safety group 0. LED life time: 60.000 L80 B10. Available finishes: White and black. Environmental Product Declaration - EPD@available, according to UNE-EN ISO 9001:2015 and UNE-EN ISO 14001:2015.

Finish: Matte black RAL 9011

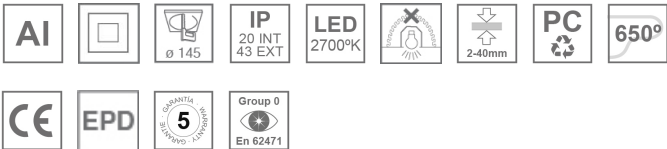
Weight: 725 g

Installation: Recessed

TECHNICAL SPECIFICATIONS:

Light output:	2.275 lm	°K :	2700
Plum:	27,7W	CRI :	90
Efficacy:	82,1 lm/w	R9 :	61
Type:	COB	MacAdam:	3
LED Lifetime:	60.000 L80 B10 (Ta=25°C)	Power Supply:	220-240V 50/60Hz
Power:	25W	Gear:	Adjustable DALI

Light output tolerance +/- 10%



CUSTOM MADE OPTIONS:



KOMBIC 150 DOWNLIGHT

K21RD3040EL927DBB

KOMBIC 150 RD 3400 IP43 9VWW EL DA BK/BK

PHOTOMETRIC DATA :

