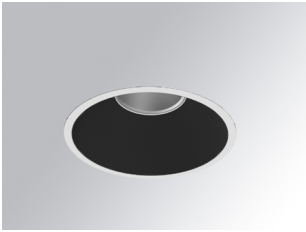


KOMBIC 150 DOWNLIGHT



K21RD3023RW930NBW



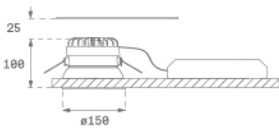
KOMBIC 150 RD 3200 IP23 9WW RF WF BK/WH

Description:

Round recessed downlight model KOMBIC 150 RD by Lamp brand. Reflector made of recycled polycarbonate R-PC FR WHITE TM non-brominated flame retardant additive. Flammability grade V0 according to UL94. Black interior reflector and frame in white finish. Heatsink made of die-cast aluminium. COB LED, colour temperature 3000K with CRI90. Luminaire with electronic wiring included. Insolation Class II. Lifetime: 66.000 L80 B10. With IP23 degree of protection. Group 0 photobiological safety. Reflector aluminium Wide Flood to achieve a controlled light distribution and low UGR<19.

Finish: Matte black RAL 9011

Weight: 704 g

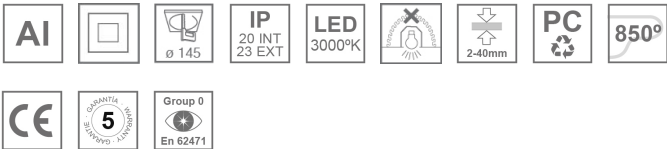


Installation: Recessed

TECHNICAL SPECIFICATIONS:

Light output:	2.763 lm	°K :	3000
Plum:	28,3W	CRI :	90
Efficacy:	97,6 lm/w	R9 :	54
UGR:	<19	MacAdam:	3
Type:	COB	Power Supply:	220-240V 50/60Hz
LED Lifetime:	66.000 L80 B10 (Ta=25°C)	Gear:	Electronic
Power:	25W		

Light output tolerance +/- 10%



CUSTOM MADE OPTIONS:



KOMBIC 150 DOWNLIGHT

K21RD3023RW930NBW

KOMBIC 150 RD 3200 IP23 9WW RF WF BK/WH

PHOTOMETRIC DATA :

