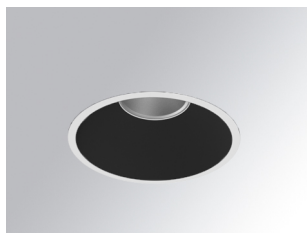


KOMBIC 150 DOWNLIGHT

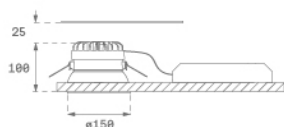
K21RD3023RF830NBW



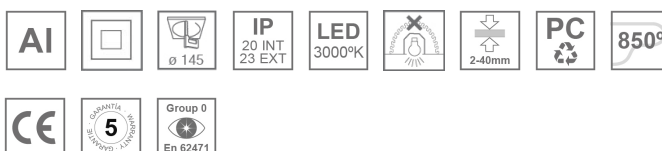
KOMBIC 150 RD 2800 IP23 WW RF FL BK/WH

Description:

Round recessed downlight model KOMBIC 150 RD by Lamp brand. Reflector made of recycled polycarbonate R-PC FR WHITE TM non-brominated flame retardant additive. Flammability grade V0 according to UL94. Black interior reflector and frame in white finish. Heatsink made of die-cast aluminium. COB LED, colour temperature 3000K with CRI80. Luminaire with electronic wiring included. Insolation Class II. Lifetime: 66.000 L90 B10. With IP23 degree of protection. Group 0 photobiological safety. Reflector aluminium Flood to achieve a controlled light distribution and low UGR<19.

Finish: Matte black RAL 9011**Weight:** 704 g**Installation:** Recessed**TECHNICAL SPECIFICATIONS:**

Light output:	2.448 lm	°K :	3000
Plum:	19,1W	CRI :	80
Efficacy:	128,2 lm/w	MacAdam:	3
UGR:	<19	Power Supply:	220-240V 50/60Hz
Type:	COB	Gear:	Electronic
LED Lifetime:	66.000 L90 B10 (Ta=25°C)		
Power:	17W		

Light output tolerance +/- 10%**CUSTOM MADE OPTIONS:**

KOMBIC 150 DOWNLIGHT

K21RD3023RF830NBW

KOMBIC 150 RD 2800 IP23 WW RF FL BK/WH

PHOTOMETRIC DATA :

