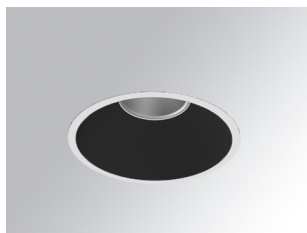


## KOMBIC 150 DOWNLIGHT

K21RD2023RF940NBW



## KOMBIC 150 RD 2400 IP23 9NW RF FL BK/WH

## Description:

Round recessed downlight model KOMBIC 150 RD by Lamp brand. Reflector made of recycled polycarbonate R-PC FR WHITE TM non-brominated flame retardant additive. Flammability grade V0 according to UL94. Black interior reflector and frame in white finish. Heatsink made of die-cast aluminium. COB LED, colour temperature 4000K with CRI90. Luminaire with electronic wiring included. Insolation Class II. Lifetime: 66.000 L90 B10. With IP23 degree of protection. Group 0 photobiological safety. Reflector aluminium Flood to achieve a controlled light distribution and low UGR<19.

Finish: Matte black RAL 9011

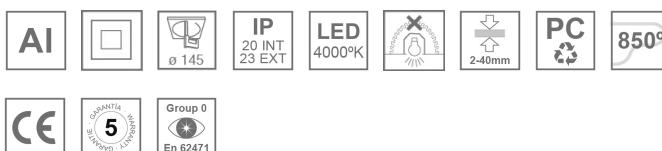
Weight: 704 g

Installation: Recessed

## TECHNICAL SPECIFICATIONS:

Light output:	2.225 lm	°K :	4000
Plum:	19,1W	CRI :	90
Efficacy:	116,5 lm/w	R9 :	68
UGR:	<19	MacAdam:	3
Type:	COB	Power Supply:	220-240V 50/60Hz
LED Lifetime:	66.000 L90 B10 (Ta=25°C)	Gear:	Electronic
Power:	17W		

Light output tolerance +/- 10%



## CUSTOM MADE OPTIONS:



KOMBIC 150 DOWNLIGHT

K21RD2023RF940NBW

KOMBIC 150 RD 2400 IP23 9NW RF FL BK/WH

PHOTOMETRIC DATA :

