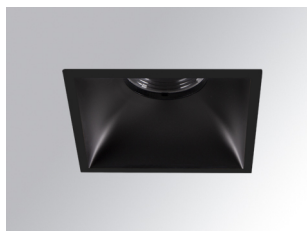


## KOMBIC 100 DOWNLIGHT

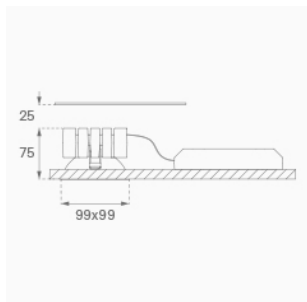
K11SQ2043EL840DBB



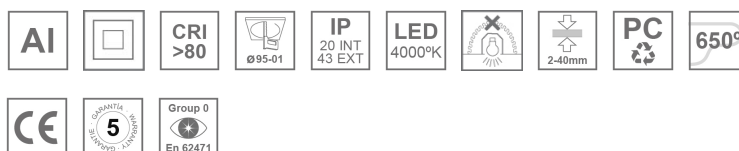
## - KOMBIC 100 SQ 2000 IP43 NW ELI. DA BK/BK

**Description:**

KOMBIC 100 square recessed downlight by LAMP. Reflector made of recycled polycarbonate R-PC FR WHITE TM non-brominated flame retardant additive. Flammability grade V0 according to UL94. Inner reflector finished in black and frame in black finish. Elliptical optic option is the perfect choice for lighting walkways and longitudinal areas such as counters or areas adjacent to work areas. This product allows for increased spacing between luminaires, reducing the effect of residual light on walls and providing a pleasant atmosphere in the space. Heatsink made of die-cast aluminium. COB LED, colour temperature 4000K with CRI80. Luminaire with electronic wiring Dali included. Insulation class II. LED life time: 50000 L80 B10. With IP43 degree of protection. Group 0 photobiological safety.

**Finish:** Matte black RAL 9011**Weight:** 517 g**Installation:** Recessed**TECHNICAL SPECIFICATIONS:**

<b>Light output:</b>	1.495 lm	<b>°K :</b>	4000
<b>Plum:</b>	13,7W	<b>CRI :</b>	80
<b>Efficacy:</b>	109,1 lm/w	<b>MacAdam:</b>	3
<b>Type:</b>	COB	<b>Power Supply:</b>	220-240V 50/60Hz
<b>LED Lifetime:</b>	50.000 L80 B10 (Ta=25°C)	<b>Gear:</b>	Adjustable DALI
<b>Power:</b>	13W		

**Light output tolerance +/- 10%****CUSTOM MADE OPTIONS:**

KOMBIC 100 DOWNLIGHT

K11SQ2043EL840DBB

KOMBIC 100 SQ 2000 IP43 NW ELI. DA BK/BK

PHOTOMETRIC DATA :

