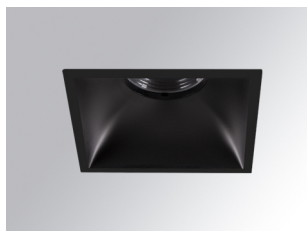


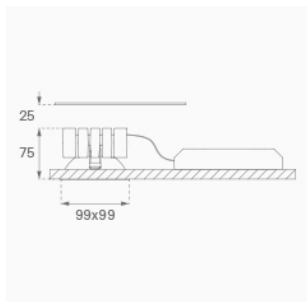
## KOMBIC 100 DOWNLIGHT

K11SQ1543WW927NBB

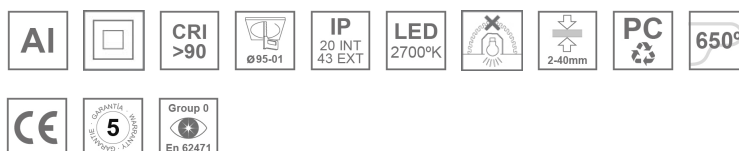
- KOMBIC 100 SQ 1500 IP43 9VWW WW BK/BK

**Description:**

LAMP Square recessed downlight KOMBIC 100 SQ 1500 Reflector made of recycled polycarbonate R-PC FR WHITE TM non-brominated flame retardant additive. Flammability grade V0 according to UL94. Inner reflector finished in Wallwasher optic option, suitable for vertical plane lighting or work areas surroundings. Heatsink made of die-cast aluminium with black finish. COB LED, colour temperature 2700K and CRI90. Electronic ON OFF gear included. IP43 rated. Insulation Class II. Photobiological safety group 0. LED life time: 50.000 L90 B10. Available finishes: White and black. Environmental Product Declaration - EPD® available, according to UNE-EN ISO 9001:2015 and UNE-EN ISO 14001:2015.

**Finish:** Matte black RAL 9011**Weight:** 517 g**Installation:** Recessed**TECHNICAL SPECIFICATIONS:**

<b>Light output:</b>	901 lm	<b>°K :</b>	2700
<b>Plum:</b>	13,7W	<b>CRI :</b>	90
<b>Efficacy:</b>	65,8 lm/w	<b>R9 :</b>	58
<b>Type:</b>	COB	<b>MacAdam:</b>	3
<b>LED Lifetime:</b>	50.000 L90 B10 (Ta=25°C)	<b>Power Supply:</b>	220-240V 50/60Hz
<b>Power:</b>	13W	<b>Gear:</b>	Electronic

**Light output tolerance +/- 10%****CUSTOM MADE OPTIONS:**

KOMBIC 100 DOWNLIGHT

K11SQ1543WW927NBB

KOMBIC 100 SQ 1500 IP43 9VWW WW BK/BK

PHOTOMETRIC DATA :

