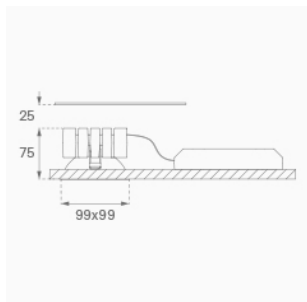
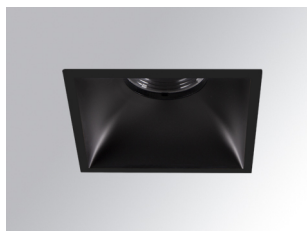


KOMBIC 100 DOWNLIGHT

K11SQ1543EL930NBB



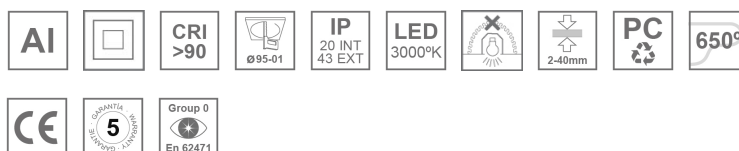
- KOMBIC 100 SQ 1500 IP43 9WW ELI. B/B

Description:

KOMBIC 100 square recessed downlight by LAMP. Reflector made of recycled polycarbonate R-PC FR WHITE TM non-brominated flame retardant additive. Flammability grade V0 according to UL94. Inner reflector finished in black and frame in black finish. Elliptical optic option is the perfect choice for lighting walkways and longitudinal areas such as counters or areas adjacent to work areas. This product allows for increased spacing between luminaires, reducing the effect of residual light on walls and providing a pleasant atmosphere in the space. Heatsink made of die-cast aluminium. COB LED, colour temperature 3000K with CRI90. Luminaire with electronic wiring included. Insulation class II. LED life time: 50000 L80 B10. With IP43 degree of protection. Group 0 photobiological safety.

Finish: Matte black RAL 9011**Weight:** 517 g**Installation:** Recessed**TECHNICAL SPECIFICATIONS:**

Light output:	1.213 lm	°K :	3000
Plum:	13,7W	CRI :	90
Efficacy:	88,6 lm/w	MacAdam:	3
Type:	COB	Power Supply:	220-240V 50/60Hz
LED Lifetime:	50.000 L80 B10 (Ta=25°C)	Gear:	Electronic
Power:	13W		

Light output tolerance +/- 10%**CUSTOM MADE OPTIONS:**

KOMBIC 100 DOWNLIGHT

K11SQ1543EL930NBB

KOMBIC 100 SQ 1500 IP43 9WW ELI. B/B

PHOTOMETRIC DATA :

