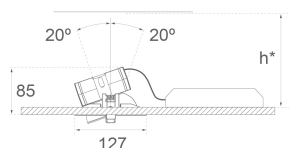
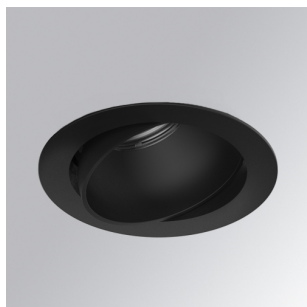


KOMBIC 100 DOWNLIGHT

K11RO2540WF830DBB



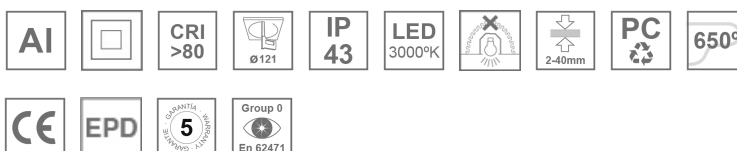
KOMBIC 100 RO 2500 IP43 WFL WW DA B/B

Description:

Adjustable recessed downlight model KOMBIC 100 RO 2500 from the brand LAMP. Aluminum injection frame and R-PC FR WHITE TM recycled polycarbonate reflector with bromine-free flame retardant. Flammability degree V0 according to UL94. Interior reflector finished in black. Adjustable luminaire +/-20° with wide flood optics for greater efficiency and control of light distribution and reduction of UGR<19 glare. Aluminum injection heat sink with cataphoresis treatment for greater thermal stability. COB LED, with 3000K color temperature with CRI80. DALI electronic equipment included. With an IP43 degree of protection. Insulation class II. Photobiological safety group 0. Hours of life: >100.000 L90 B10. Finished in black and white.

Finish: Matte black RAL 9011**Weight:** 545 g**Installation:** Recessed**TECHNICAL SPECIFICATIONS:**

| | | | |
|----------------------|----------------------------|----------------------|------------------|
| Light output: | 1.652 lm | °K : | 3000 |
| Plum: | 14W | CRI : | 80 |
| Efficacy: | 118 lm/w | MacAdam: | 3 |
| UGR: | <19 | Power Supply: | 220-240V 50/60Hz |
| Type: | COB | Gear: | Adjustable DALI |
| LED Lifetime: | >100.000 L90 B10 (Ta=25°C) | | |
| Power: | 12W | | |

Light output tolerance +/- 10%**CUSTOM MADE OPTIONS:**

KOMBIC 100 DOWNLIGHT

K11RO2540WF830DBB

KOMBIC 100 RO 2500 IP43 WFL WW DA B/B

PHOTOMETRIC DATA :

