

# IMAG

IM3TK30MF940NB



**- IMAG G3 TRACK 3000 9NW MF BK**

**Description:**

Multi-directional three-phase track projector model IMAG G3 TRACK 3000 9NW MFL BK., LAMP brand. Manufactured with aluminium die casting and polycarbonate finished in texturized black. Passive dissipation for thermal management. Model for COB LED CRI90, with neutral white colour temperature and control gear included. High quality aluminium Medium Flood reflector. Insulation class II. Lifetime 50.000 L80 B10



**Finish:** Texturised graphite RAL 7021

**Dimensions:** 130 x 94 x 185 mm

**Weight:** 1.192 g

**Installation:** 3-Circuit track

**TECHNICAL SPECIFICATIONS:**

<b>Light output:</b>	2.546 lm	<b>°K :</b>	4000
<b>Plum:</b>	28,8W	<b>CRI :</b>	90
<b>Efficacy:</b>	88,4 lm/w	<b>R9 :</b>	58
<b>UGR:</b>	<19	<b>MacAdam:</b>	3
<b>Type:</b>	COB	<b>Power Supply:</b>	220-240V 50/60Hz
<b>LED Lifetime:</b>	50.000 L80 B10 (Ta=25°C)	<b>Gear:</b>	Electronic
<b>Power:</b>	25W		

*Light output tolerance +/- 10%*

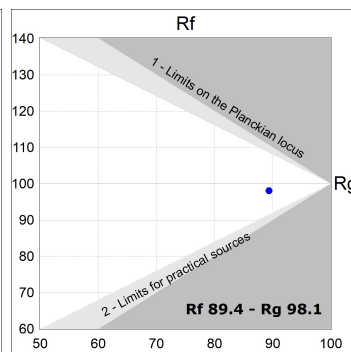
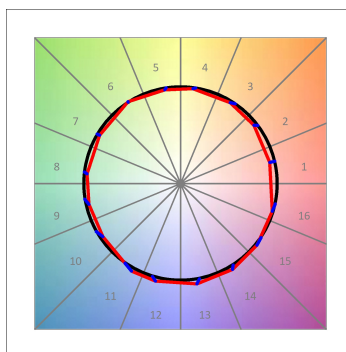
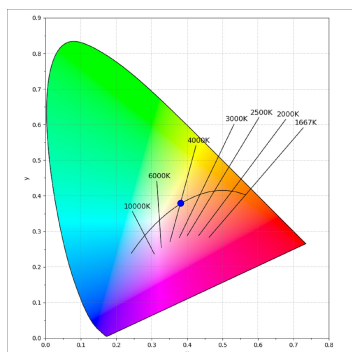
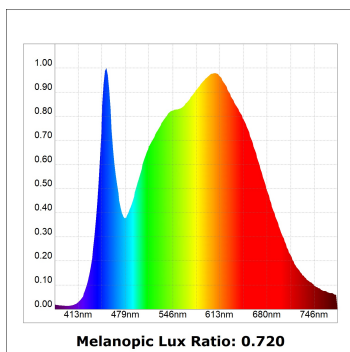
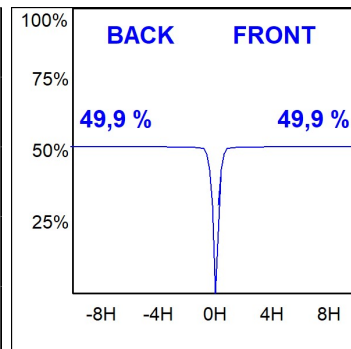
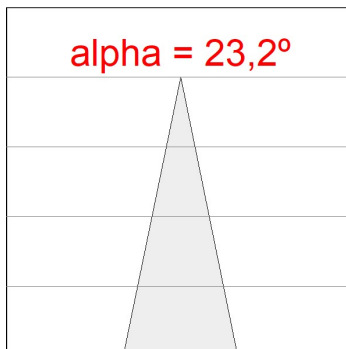
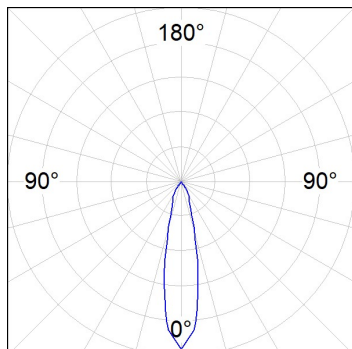


**CUSTOM MADE OPTIONS:**



PHOTOMETRIC DATA :

IM3TK30MF940NB  
 $\eta = 100\%$   
 $I_{max} = 3844 \text{ cd/klm}$   
 UTE:  
 CIE: 100 100 100 100 100



**ACCESORIES :**

**Assembly**



**Product code:**

TKACXB

**Description:**

TRACK ACC COVER "X" REC N/D BK

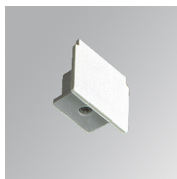


**Product code:**

TKACXW

**Description:**

TRACK ACC COVER "X" REC N/D WH



**Product code:**

TKAECB

TKAECG

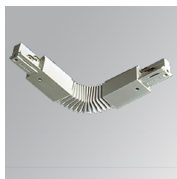
TKAECW

**Description:**

TRACK ACC. END COVER BK.

TRACK ACC. END COVER GR.

TRACK ACC. END COVER WH.



**Product code:**

TKAJFDB

TKAJFDNG

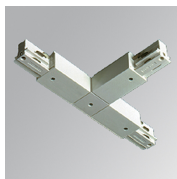
TKAJFDNW

**Description:**

TRACK ACC. FLEX CORNER BK.

TRACK ACC. FLEX CORNER GR.

TRACK ACC. FLEX CORNER WH.



**Product code:**

TKATLIDNB

TKATLIDNG

TKATLIDNW

TKATLODNB

TKATLODNG

TKATLODNW

TKATRIDNB

TKATRIDNG

TKATRIDNW

TKATRODNB

TKATRODNG

TKATRODNW

**Description:**

TRACK ACC. INT LEFT T JOINT BK.

TRACK ACC. INT LEFT T JOINT GR.

TRACK ACC. INT LEFT T JOINT WH.

TRACK ACC. EXT LEFT T JOINT BK.

TRACK ACC. EXT LEFT T JOINT GR.

TRACK ACC. EXT LEFT T JOINT WH.

TRACK ACC. INT RIGHT T JOINT BK.

TRACK ACC. INT RIGHT T JOINT GR.

TRACK ACC. INT RIGHT T JOINT WH.

TRACK ACC. EXT RIGHT T JOINT BK.

TRACK ACC. EXT RIGHT T JOINT GR.

TRACK ACC. EXT RIGHT T JOINT WH.



**Product code:**

TKAXJDNB

TKAXJDNG

TKAXJDNW

**Description:**

TRACK ACC. X JOINT BK.

TRACK ACC. X JOINT GR.

TRACK ACC. X JOINT WH.

**ACCESORIES :**

**Suspension**



**Product code:**  
TKARG1000W

**Description:**  
TRACK ACC. RIGID SUSP 1M WH.



**Product code:**  
TKASUSSUB

**Description:**  
TRACK ACC. SUSP SUPPORT BK.



**Product code:**  
TKASUSSUW

**Description:**  
TRACK ACC. SUSP SUPPORT WH.



**Product code:**  
TKAWI3000B

**Description:**  
TRACK ACC. STEEL CABLE 3M BK.



**Product code:**  
TKAWI3000W

**Description:**  
TRACK ACC. STEEL CABLE 3M WH.

---

**ACCESORIES :**

**Support**



**Product code:**  
TKASRSUB

**Description:**  
TRACK ACC. SUR SUPPORT BK.



**Product code:**  
TKASRSUW

**Description:**  
TRACK ACC. SUR SUPPORT WH.



**Product code:**  
TKASUSSUG

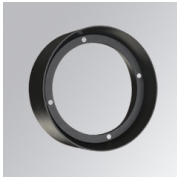
**Description:**  
TRACK ACC. SUSP SUPPORT GR.

---

**ACCESORIES :**

**Optical**

# IMAG



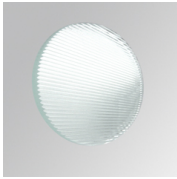
**Product code:**  
ADRD170B

**Description:**  
LOOK/IMAG ACC. ADAPTOR



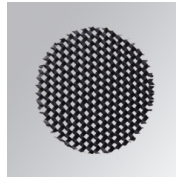
**Product code:**  
CURD95B

**Description:**  
LOOK/IMAG ACC. BUFFER



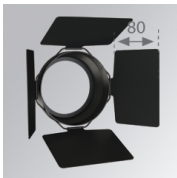
**Product code:**  
ELRD150

**Description:**  
LOOK/IMAG ACC. FRESNEL LENS



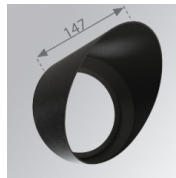
**Product code:**  
HORD150

**Description:**  
LOOK/IMAG ACC. HONEYCOMB GRILLE



**Product code:**  
LORD170B

**Description:**  
LOOK/IMAG ACC. ANTI-GLARE LOUVRES



**Product code:**  
SCRD170B

**Description:**  
LOOK/IMAG ACC. SCREEN