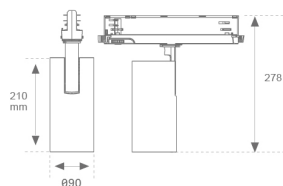


**HS2TK30FL840DB**

**HANCE G2 TRACK 220 3000 NW FL DALI BK**
**Description:**

LAMP three-phase track multidirectional spotlight HANCE G2 TRACK 220 3000 . Allowing 355° rotation and tilting up to 90°. Body made of die-cast aluminium for proper thermal management. Black polycarbonate injection moulded anti-glare ring. 35° flood reflector. LED COB, 4000K and CRI80. Electronic DALI control gear included. IP20, IK07 ratings. Insulation Class II. LED life time: 72.000 L80B10 (Ta=25°C). Available finishes: Textured white and textured black.

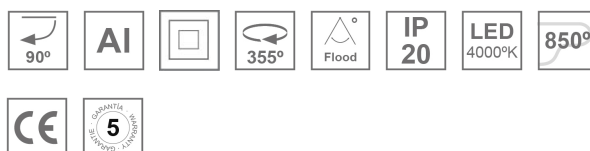
**Finish:** Texturised black RAL 9011

**Installation:** 3-Circuit track

**TECHNICAL SPECIFICATIONS:**

<b>Light output:</b>	3.318 lm	<b>°K :</b>	4000
<b>Plum:</b>	27,5W	<b>CRI :</b>	80
<b>Efficacy:</b>	120,7 lm/w	<b>R9 :</b>	64
<b>UGR:</b>	<19	<b>MacAdam:</b>	3
<b>Type:</b>	COB	<b>Power Supply:</b>	220-240V 50/60Hz
<b>LED Lifetime:</b>	72.000 L80B10 (Ta=25°C)	<b>Gear:</b>	Adjustable DALI
<b>Power:</b>	25W		

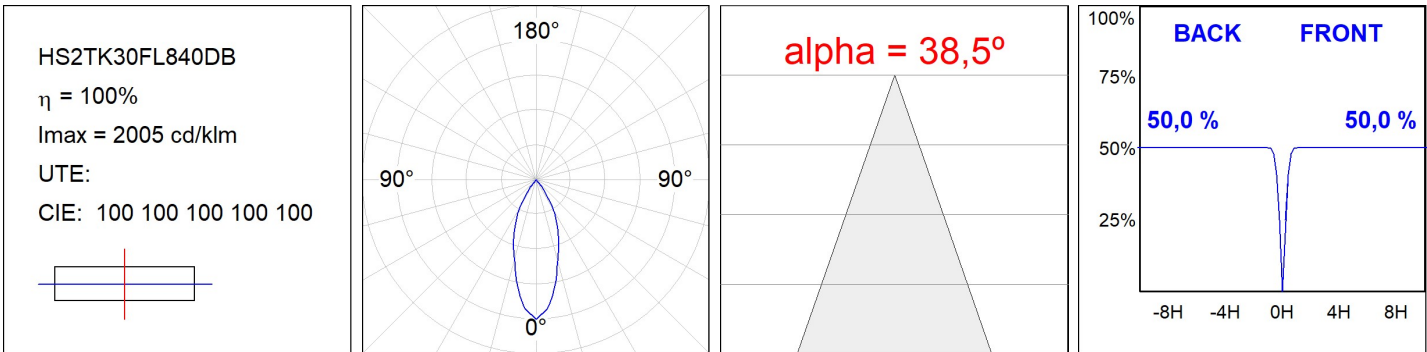
*Light output tolerance +/- 10%*


**CUSTOM MADE OPTIONS:**


HS2TK30FL840DB

HANCE G2 TRACK 220 3000 NW FL DALI BK

PHOTOMETRIC DATA :



ACCESORIES :

Assembly



**Product code:**  
TKAAIDNB

**Description:**  
TRACK ACC INT MAIN SUPPLY DALI/ONOFF BK



**Product code:**  
TKAAIDNG

**Description:**  
TRACK ACC INT MAIN SUPPLY DALI/ONOFF GR



**Product code:**  
TKAAIDNW

**Description:**  
TRACK ACC INT MAIN SUPPLY DALI/ONOFF WH



**Product code:**  
TKAALDNB

**Description:**  
TRACK ACC LEFT MAIN SUPPLY DALI/ONOFF BK



**Product code:**  
TKAALDNG

**Description:**  
TRACK ACC LEFT MAIN SUPPLY DALI/ONOFF GR



**Product code:**  
TKAALDNW

**Description:**  
TRACK ACC LEFT MAIN SUPPLY DALI/ONOFF WH



**Product code:**  
TKAARDNB

**Description:**  
TRACK ACC RIGHT MAIN SUPPL DALI/ONOFF BK



**Product code:**  
TKAARDNG

**Description:**  
TRACK ACC RIGHT MAIN SUPPL DALI/ONOFF GR



**Product code:**  
TKAARDNW

**Description:**  
TRACK ACC RIGHT MAIN SUPPL DALI/ONOFF WH

**Product code:**  
TKACOB

**Description:**  
TRACK ACC COVER INT SUPPLY REC N/D BK

<b>Product code:</b>	<b>Description:</b>	<b>Product code:</b>	<b>Description:</b>
TKACOG	TRACK ACC COVER INT SUPPLY REC N/D GR	TKACOW	TRACK ACC COVER INT SUPPLY REC N/D WH



<b>Product code:</b>	<b>Description:</b>
TKACTC	TRACK ACC. CUT TOOL COPPER

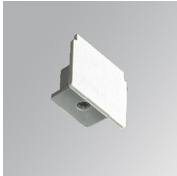


<b>Product code:</b>	<b>Description:</b>
TKACXB	TRACK ACC COVER "X" REC N/D BK

<b>Product code:</b>	<b>Description:</b>
TKACXG	TRACK ACC COVER "X" REC N/D GR



<b>Product code:</b>	<b>Description:</b>
TKACXW	TRACK ACC COVER "X" REC N/D WH



<b>Product code:</b>	<b>Description:</b>
TKAECB	TRACK ACC. END COVER BK.
TKAECG	TRACK ACC. END COVER GR.
TKAECW	TRACK ACC. END COVER WH.



<b>Product code:</b>	<b>Description:</b>
TKAJFDNB	TRACK ACC. FLEX CORNER BK.
TKAJFDNG	TRACK ACC. FLEX CORNER GR.
TKAJFDNW	TRACK ACC. FLEX CORNER WH.



<b>Product code:</b>	<b>Description:</b>
TKAJUDNB	TRACK ACC SRT W/O SP JOINT DALI/ONOFF BK



<b>Product code:</b>	<b>Description:</b>
TKAJUDNG	TRACK ACC SRT W/O SP JOINT DALI/ONOFF GR



**Product code:**  
TKAJUDNW

**Description:**  
TRACK ACC SRT W/O SP JOINT DALI/ONOFF WH



**Product code:**  
TKALIDNB

**Description:**  
TRACK ACC INT 90° CORNER DALI/ONOFF BK



**Product code:**  
TKALIDNG

**Description:**  
TRACK ACC INT 90° CORNER DALI/ONOFF GR



**Product code:**  
TKALIDNW

**Description:**  
TRACK ACC INT 90° CORNER DALI/ONOFF WH



**Product code:**  
TKALODNB

**Description:**  
TRACK ACC EXT 90° CORNER DALI/ONOFF BK



**Product code:**  
TKALODNG

**Description:**  
TRACK ACC EXT 90° CORNER DALI/ONOFF GR



**Product code:**  
TKALODNW

**Description:**  
TRACK ACC EXT 90° CORNER DALI/ONOFF WH



**Product code:**  
TKATLIDNB  
TKATLIDNG  
TKATLIDNW  
TKATLODNB  
TKATLODNG  
TKATLODNW  
TKATRIDNB  
TKATRIDNG  
TKATRIDNW  
TKATRODNB  
TKATRODNG  
TKATRODNW

**Description:**  
TRACK ACC. INT LEFT T JOINT BK.  
TRACK ACC. INT LEFT T JOINT GR.  
TRACK ACC. INT LEFT T JOINT WH.  
TRACK ACC. EXT LEFT T JOINT BK.  
TRACK ACC. EXT LEFT T JOINT GR.  
TRACK ACC. EXT LEFT T JOINT WH.  
TRACK ACC. INT RIGHT T JOINT BK.  
TRACK ACC. INT RIGHT T JOINT GR.  
TRACK ACC. INT RIGHT T JOINT WH.  
TRACK ACC. EXT RIGHT T JOINT BK.  
TRACK ACC. EXT RIGHT T JOINT GR.  
TRACK ACC. EXT RIGHT T JOINT WH.

**Product code:**

TKAXJDNB

TKAXJDNG

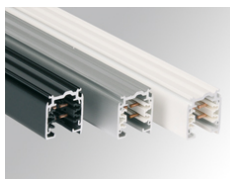
TKAXJDNW

**Description:**

TRACK ACC. X JOINT BK.

TRACK ACC. X JOINT GR.

TRACK ACC. X JOINT WH.

**Product code:**

TKSUPR1000DNB

TKSUPR1000DNG

TKSUPR1000DNW

TKSUPR2000DNB

TKSUPR2000DNG

TKSUPR2000DNW

TKSUPR3000DNB

TKSUPR3000DNG

TKSUPR3000DNW

**Description:**

TRACK SUR 1M DALI/ONOFF BK.

TRACK SUR 1M DALI/ONOFF GR.

TRACK SUR 1M DALI/ONOFF WH.

TRACK SUR 2M DALI/ONOFF BK.

TRACK SUR 2M DALI/ONOFF GR.

TRACK SUR 2M DALI/ONOFF WH.

TRACK SUR 3M DALI/ONOFF BK.

TRACK SUR 3M DALI/ONOFF GR.

TRACK SUR 3M DALI/ONOFF WH.

**ACCESORIES :****Suspension****Product code:**

TKARG1000W

**Description:**

TRACK ACC. RIGID SUSP 1M WH.

**Product code:**

TKASUSSUB

**Description:**

TRACK ACC. SUSP SUPPORT BK.

**Product code:**

TKASUSSUW

**Description:**

TRACK ACC. SUSP SUPPORT WH.

**Product code:**

TKAWI3000B

**Description:**

TRACK ACC. STEEL CABLE 3M BK.

**Product code:**

TKAWI3000W

**Description:**

TRACK ACC. STEEL CABLE 3M WH.

**ACCESORIES :****Support**

**Product code:**

TKASRSUB

**Description:**

TRACK ACC. SUR SUPPORT BK.

**Product code:**

TKASRSUG

**Description:**

TRACK ACC. SUR SUPPORT GR.

**Product code:**

TKASRSUW

**Description:**

TRACK ACC. SUR SUPPORT WH.

**Product code:**

TKASUSUG

**Description:**

TRACK ACC. SUSP SUPPORT GR.

---

**ACCESSORIES :**
**Optical****Product code:**

HS2HO75

**Description:**

HANCE G2 3000/4000 ACC. HONEYCOMB GRILLE

**Product code:**

HS2RI90C

**Description:**

HANCE G2 3000/4000 ACC. RING DECO CO.

**Product code:**

HS2RI90M

**Description:**

HANCE G2 3000/4000 ACC. RING DECO MET.

**Product code:**

HS2RI90W

**Description:**

HANCE G2 3000/4000 ACC. RING DECO WH.

**Product code:**

HS2TR75

**Description:**

HANCE G2 3000/4000 ACC. DIF TRANS

**Product code:**

HSSL50

**Description:**

HANCE 1000/2000 ACC. SOFT LENS