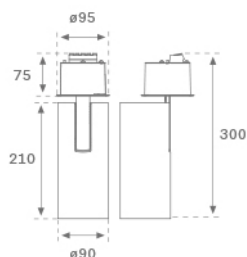
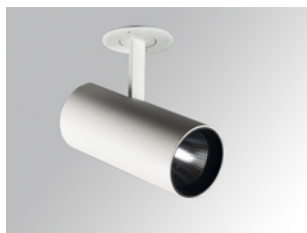


HS2SR40MF840DW

HANCE G2 SEMIREC 4000 NW MFL DALI WH
Description:

LAMP semi-recessed multidirectional spotlight HANCE G2 SEMIREC 4000. Allowing 355° rotation and tilting up to 90°. Body made of die-cast aluminium for proper thermal management. Black polycarbonate injection moulded anti-glare ring. 25° middle flood reflector. LED COB, 4000K and CRI80. Electronic DALI control gear included. IP20, IK07 ratings. Insulation Class II. LED life time: 72.000 L80B10 (Ta=25°C). Available finishes: Textured white and textured black.

Finish: Texturised white RAL 9010

Installation: Semi-Recessed

TECHNICAL SPECIFICATIONS:

Light output:	4.591 lm	°K :	4000
Plum:	36,7W	CRI :	80
Efficacy:	125,1 lm/w	R9 :	64
UGR:	<19	MacAdam:	3
Type:	COB	Power Supply:	220-240V 50/60Hz
LED Lifetime:	72.000 L80B10 (Ta=25°C)	Gear:	Adjustable DALI
Power:	33W		

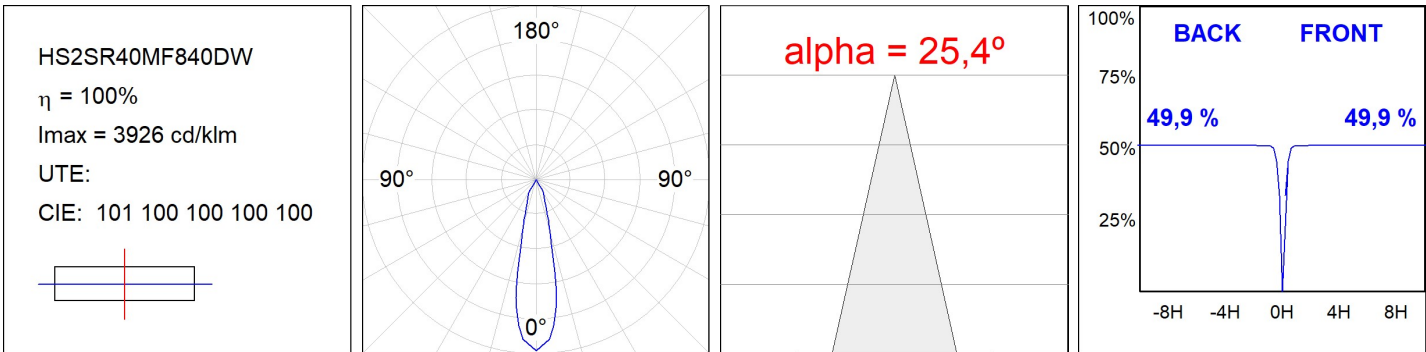
Light output tolerance +/- 10%


CUSTOM MADE OPTIONS:


HS2SR40MF840DW

HANCE G2 SEMIREC 4000 NW MFL DALI WH

PHOTOMETRIC DATA :



ACCESORIES :

Optical



Product code:

HSSL50

Description:

HANCE 1000/2000 ACC. SOFT LENS