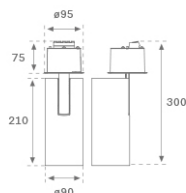
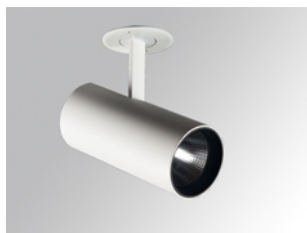


HS2SR30MF830DW

HANCE G2 SEMIREC 3000 WW MFL DALI WH
Description:

LAMP semi-recessed multidirectional spotlight HANCE G2 SEMIREC 3000. Allowing 355° rotation and tilting up to 90°. Body made of die-cast aluminium for proper thermal management. Black polycarbonate injection moulded anti-glare ring. 25° middle flood reflector. LED COB, 3000K and CRI80. Electronic DALI control gear included. IP20, IK07 ratings. Insulation Class II. LED life time: 72.000 L80B10 (Ta=25°C). Available finishes: Textured white and textured black.

Finish: Texturised white RAL 9010

Installation: Semi-Recessed

TECHNICAL SPECIFICATIONS:

Light output:	3.356 lm	°K :	3000
Plum:	28,3W	CRI :	80
Efficacy:	118,6 lm/w	R9 :	61
UGR:	<19	MacAdam:	3
Type:	COB	Power Supply:	220-240V 50/60Hz
LED Lifetime:	72.000 L80B10 (Ta=25°C)	Gear:	Adjustable DALI
Power:	25W		

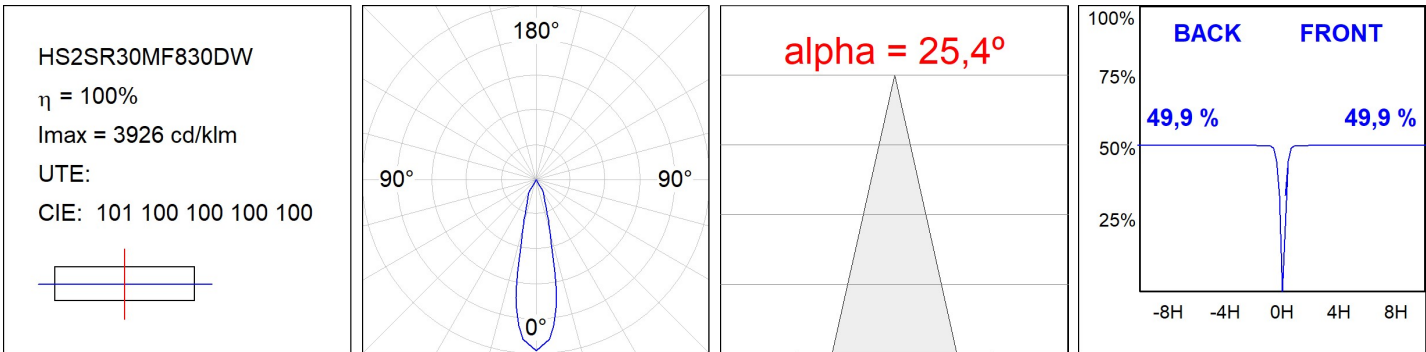
Light output tolerance +/- 10%


CUSTOM MADE OPTIONS:


HS2SR30MF830DW

HANCE G2 SEMIREC 3000 WW MFL DALI WH

PHOTOMETRIC DATA :



ACCESSORIES :

Optical



Product code:
HS2HO75

Description:
HANCE G2 3000/4000 ACC. HONEYCOMB GRILLE



Product code:
HS2RI90C

Description:
HANCE G2 3000/4000 ACC. RING DECO CO.



Product code:
HS2RI90M

Description:
HANCE G2 3000/4000 ACC. RING DECO MET.



Product code:
HS2RI90W

Description:
HANCE G2 3000/4000 ACC. RING DECO WH.



Product code:
HS2TR75

Description:
HANCE G2 3000/4000 ACC. DIF TRANS



Product code:
HSSL50

Description:
HANCE 1000/2000 ACC. SOFT LENS