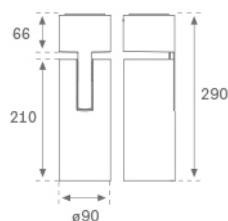
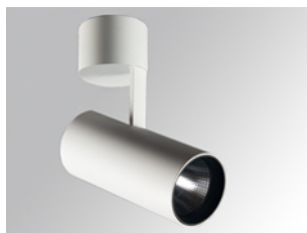


HS2SF40FL840NW



HANCE G2 SUR 4000 NW FL WH

Description:

LAMP surface multidirectional spotlight HANCE G2 SUR 4000 . Allowing 355° rotation and tilting up to 90°. Body made of die-cast aluminium for proper thermal management. Black polycarbonate injection moulded anti-glare ring. 35° flood reflector. LED COB, 4000K y CRI80. Electronic ON OFF control gear included. IP20, IK07 ratings. Insulation Class I. LED life time: 72.000 L80B10 (Ta=25°C). Available finishes: Textured white and textured black.

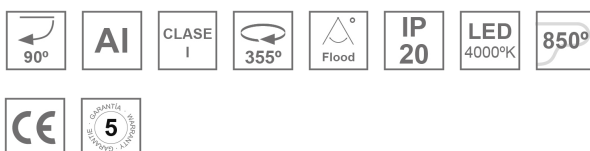
Finish: Texturised white RAL 9010

Installation: Surface

TECHNICAL SPECIFICATIONS:

Light output:	4.467 lm	°K :	4000
Plum:	36,7W	CRI :	80
Efficacy:	121,7 lm/w	R9 :	64
Type:	COB	MacAdam:	3
LED Lifetime:	72.000 L80B10 (Ta=25°C)	Power Supply:	220-240V 50/60Hz
Power:	33W	Gear:	Electronic

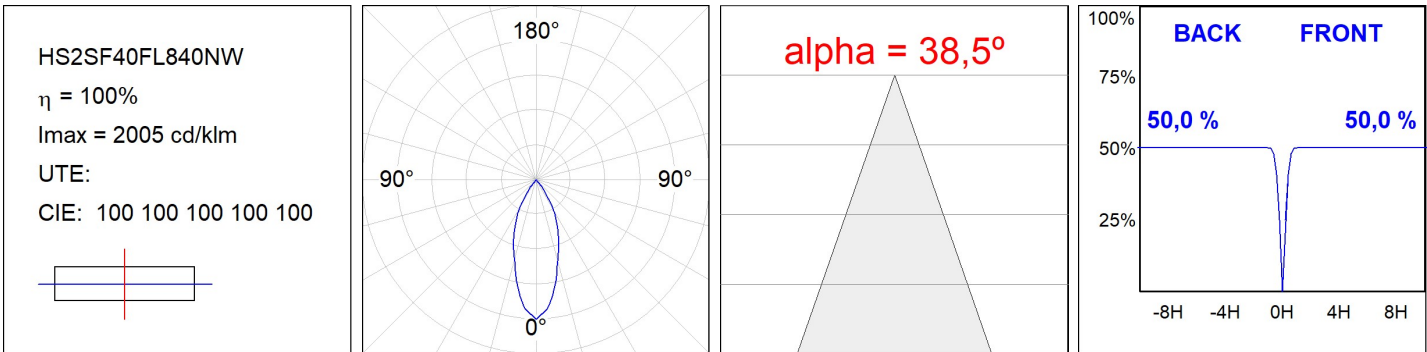
Light output tolerance +/- 10%

**CUSTOM MADE OPTIONS:**

HS2SF40FL840NW

HANCE G2 SUR 4000 NW FL WH

PHOTOMETRIC DATA :



ACCESORIES :

Optical



Product code:

HSSL50

Description:

HANCE 1000/2000 ACC. SOFT LENS