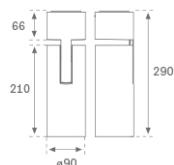
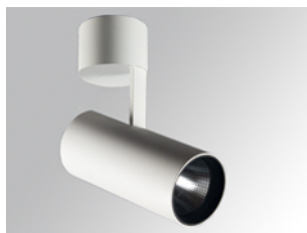


**HS2SF30SP930NW**

**HANCE G2 SUR 3000 9WW SP WH**
**Description:**

LAMP surface multidirectional spotlight HANCE G2 SUR3000. Allowing 355° rotation and tilting up to 90°. Body made of die-cast aluminium for proper thermal management. Black polycarbonate injection moulded anti-glare ring. 20° spot reflector. LED COB, 3000K y CRI90. Electronic ON OFF control gear included. IP20, IK07 ratings. Insulation Class I. LED life time: 72.000 L80B10 (Ta=25°C). Available finishes: Textured white and textured black.

**Finish:** Texturised white RAL 9010

**Installation:** Surface

**TECHNICAL SPECIFICATIONS:**

<b>Light output:</b>	2.759 lm	<b>°K :</b>	3000
<b>Plum:</b>	28,3W	<b>CRI :</b>	90
<b>Efficacy:</b>	97,5 lm/w	<b>R9 :</b>	61
<b>UGR:</b>	<19	<b>MacAdam:</b>	3
<b>Type:</b>	COB	<b>Power Supply:</b>	220-240V 50/60Hz
<b>LED Lifetime:</b>	72.000 L80B10 (Ta=25°C)	<b>Gear:</b>	Electronic
<b>Power:</b>	25W		

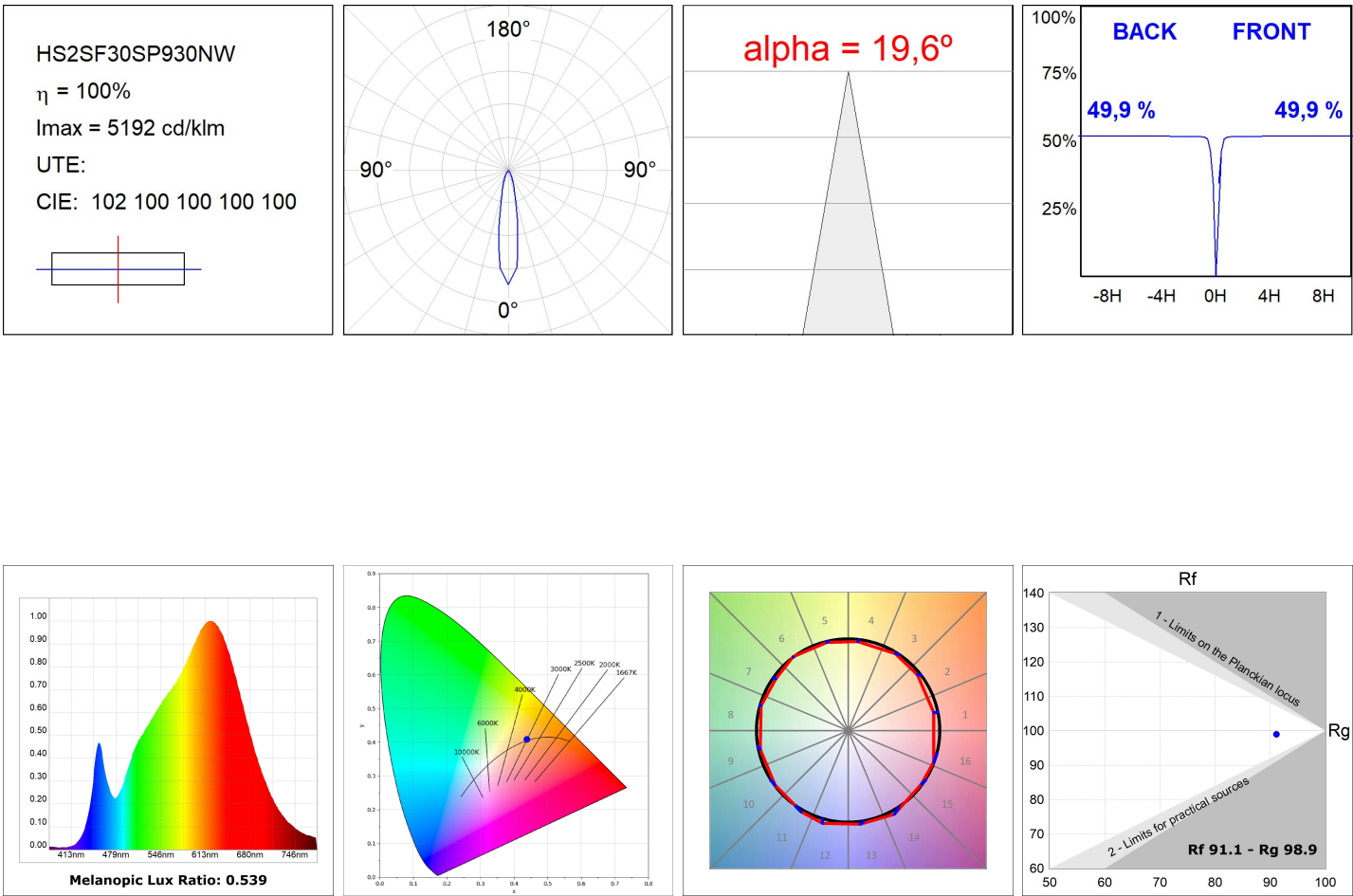
*Light output tolerance +/- 10%*


**CUSTOM MADE OPTIONS:**


HS2SF30SP930NW

HANCE G2 SUR 3000 9WW SP WH

PHOTOMETRIC DATA :



ACCESORIES :

Optical



Product code:

HSSL50

Description:

HANCE 1000/2000 ACC. SOFT LENS