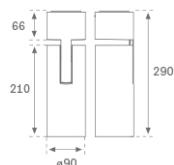
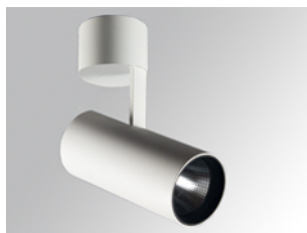


HS2SF30SP840DW



HANCE G2 SUR 3000 NW SP DALI WH

Description:

LAMP surface multidirectional spotlight HANCE G2 SUR 3000. Allowing 355° rotation and tilting up to 90°. Body made of die-cast aluminium for proper thermal management. Black polycarbonate injection moulded anti-glare ring. 20° spot reflector. LED COB, 4000K and CRI80. Electronic DALI control gear included. IP20, IK07 ratings. Insulation Class I. LED life time: 72.000 L80B10 (Ta=25°C). Available finishes: Textured white and textured black.

Finish: Texturised white RAL 9010

Installation: Surface

TECHNICAL SPECIFICATIONS:

Light output:	3.419 lm	°K :	4000
Plum:	28,3W	CRI :	80
Efficacy:	120,8 lm/w	R9 :	64
UGR:	<19	MacAdam:	3
Type:	COB	Power Supply:	220-240V 50/60Hz
LED Lifetime:	72.000 L80B10 (Ta=25°C)	Gear:	Adjustable DALI
Power:	25W		

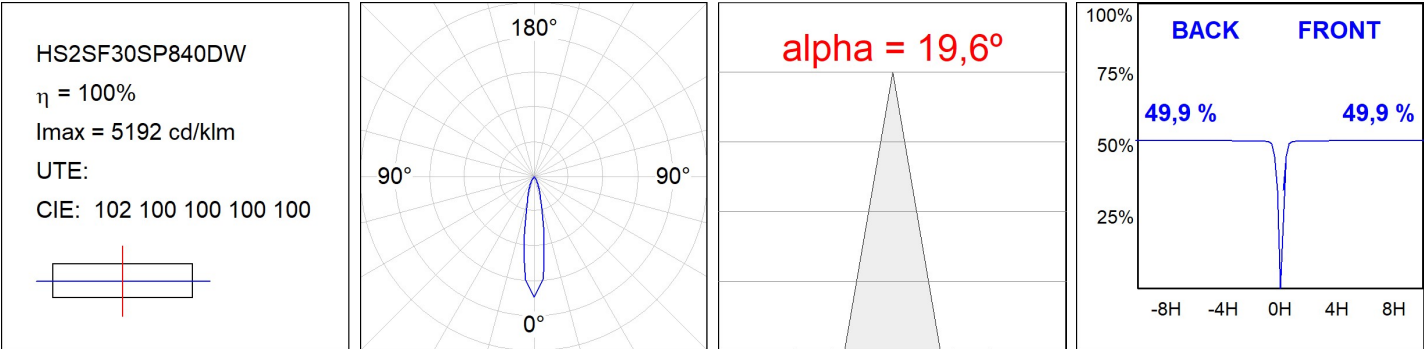
Light output tolerance +/- 10%

**CUSTOM MADE OPTIONS:**

HS2SF30SP840DW

HANCE G2 SUR 3000 NW SP DALI WH

PHOTOMETRIC DATA :



ACCESORIES :

Optical



Product code:

HSSL50

Description:

HANCE 1000/2000 ACC. SOFT LENS