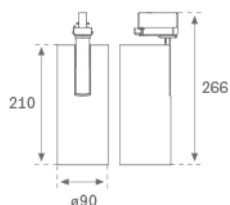


HS1TK40FL840NBB



HANCE TRACK 220 4000 NW FL BK.

Description:

Multi-directional to adapt to three-phase track projector model HANCE TRACK 220 4000 NW FL BK., LAMP brand. Made of textured black color painted injected aluminium. Passive dissipation for a proper thermal management. Model for LED COB, with neutral white colour temperature and control gear included. With Flood high purity aluminium reflector. Insulation class I.

Finish: Texturised black RAL 9011

Weight: 1.350 g

Installation: 3-Circuit track

TECHNICAL SPECIFICATIONS:

Light output:	3.845 lm	°K :	4000
Plum:	37,6W	CRI :	80
Efficacy:	102,3 lm/w	MacAdam:	3
Type:	COB	Power Supply:	220-240V 50/60Hz
LED Lifetime:	50.000 L80 B10 (Ta=25°C)	Gear:	Electronic
Power:	34W		

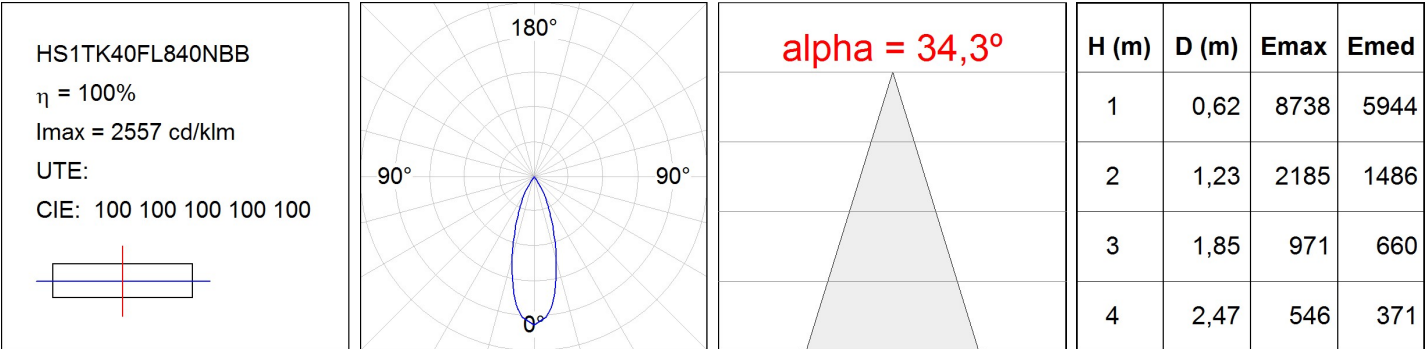
Light output tolerance +/- 10%

**CUSTOM MADE OPTIONS:**

HS1TK40FL840NBB

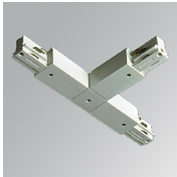
HANCE TRACK 220 4000 NW FL BK.

PHOTOMETRIC DATA :



ACCESORIES :

Assembly



Product code:
TKATLODNB
TKATLODNG

Description:
TRACK ACC. EXT LEFT T JOINT BK.
TRACK ACC. EXT LEFT T JOINT GR.

ACCESORIES :

Optical



Product code:
HSCU75

Description:
HANCE 3000/4000 ACC. CUTTING BEAM



Product code:
HSHO75

Description:
HANCE 3000/4000 ACC. HONEYCOMB GRILLE



Product code:
HSRI90C

Description:
HANCE 3000/4000 ACC. RING DECO CO.



Product code:
HSRI90M

Description:
HANCE 3000/4000 ACC. RING DECO MET.



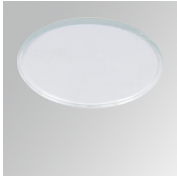
Product code:
HSRI90W

Description:
HANCE 3000/4000 ACC. RING DECO WH.



Product code:
HSSL75

Description:
HANCE 3000/4000 ACC. SOFT LENS



Product code:
HSTR75

Description:
HANCE 3000/4000 ACC. DIF TRANS