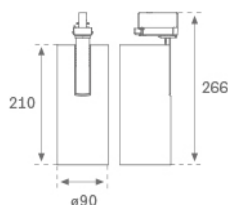


## HS1TK40FL840DBB



## HANCE TRACK 220 4000 NW FL DALI BK.

**Description:**

Multi-directional to adapt to three-phase track projector model HANCE TRACK 220 4000 NW FL DALI BK., LAMP brand. Made of textured black color painted injected aluminium. Passive dissipation for a proper thermal management. Model for LED COB, with neutral white colour temperature and control DALI gear included. With Flood high purity aluminium reflector. Insulation class I.

**Finish:** Texturised black RAL 9011

**Weight:** 1.350 g

**Installation:** 3-Circuit track

**TECHNICAL SPECIFICATIONS:**

<b>Light output:</b>	3.845 lm	<b>°K :</b>	4000
<b>Plum:</b>	37,6W	<b>CRI :</b>	80
<b>Efficacy:</b>	102,3 lm/w	<b>MacAdam:</b>	3
<b>Type:</b>	COB	<b>Power Supply:</b>	220-240V 50/60Hz
<b>LED Lifetime:</b>	50.000 L80 B10 (Ta=25°C)	<b>Gear:</b>	Adjustable DALI
<b>Power:</b>	34W		

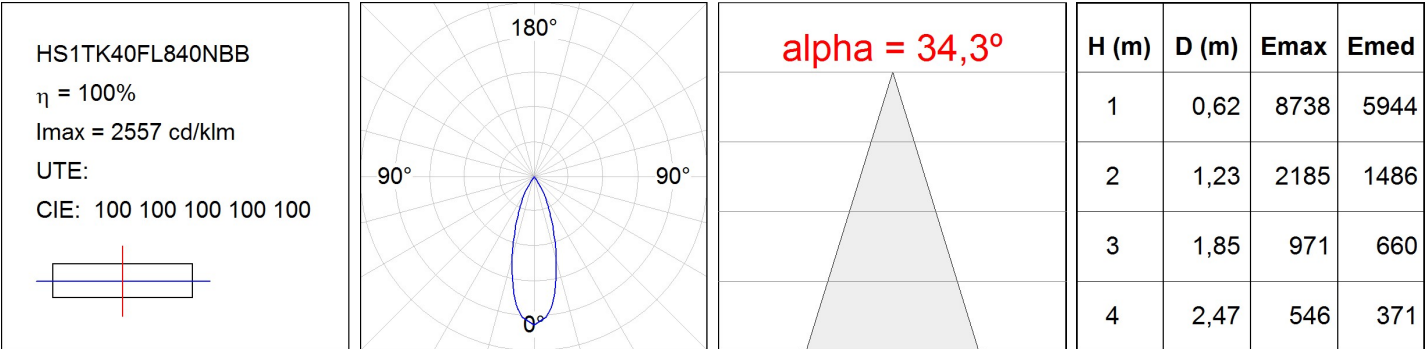
*Light output tolerance +/- 10%*

**CUSTOM MADE OPTIONS:**

HS1TK40FL840DBB

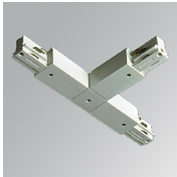
HANCE TRACK 220 4000 NW FL DALI BK.

PHOTOMETRIC DATA :



ACCESSORIES :

Assembly



**Product code:**  
TKATLODNB  
TKATLODNG

**Description:**  
TRACK ACC. EXT LEFT T JOINT BK.  
TRACK ACC. EXT LEFT T JOINT GR.

ACCESSORIES :

Optical



**Product code:**  
HSCU75

**Description:**  
HANCE 3000/4000 ACC. CUTTING BEAM



**Product code:**  
HSHO75

**Description:**  
HANCE 3000/4000 ACC. HONEYCOMB GRILLE



**Product code:**  
HSRI90C

**Description:**  
HANCE 3000/4000 ACC. RING DECO CO.



**Product code:**  
HSRI90M

**Description:**  
HANCE 3000/4000 ACC. RING DECO MET.



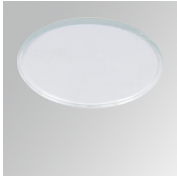
**Product code:**  
HSRI90W

**Description:**  
HANCE 3000/4000 ACC. RING DECO WH.



**Product code:**  
HSSL75

**Description:**  
HANCE 3000/4000 ACC. SOFT LENS



**Product code:**  
HSTR75

**Description:**  
HANCE 3000/4000 ACC. DIF TRANS