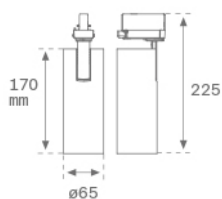


HS1TK20SS840NBB

HANCE TRACK 220 2000 NW SSP BK/BK.
Description:

Multi-directional to adapt to three-phase track projector model HANCE TRACK 220 2000 NW SSP BK/BK., LAMP brand. Made of textured black color painted injected aluminium. Passive dissipation for a proper thermal management. Model for LED HI-POWER, with neutral white colour temperature and control gear included. With Superspot optics. Insulation class I.

Finish: Texturised black RAL 9011

Weight: 650 g

IEE : A

Installation: 3-Circuit track

TECHNICAL SPECIFICATIONS:

Light output:	921 lm	°K :	4000
Plum:	14W	CRI :	80
Efficacy:	66 lm/w	MacAdam:	3
Type:	HIGH POWER CREE	Alimentación:	120-277V 50/60Hz
LED Lifetime:	50.000 L90	Gear:	Electronic
Power:	13W		


CUSTOM MADE OPTIONS:

HS1TK20SS840NBB

HANCE TRACK 220 2000 NW SSP BK/BK.

PHOTOMETRIC DATA :

ACCESORIES :**Assembly****Product code:**

TKAECG

Description:

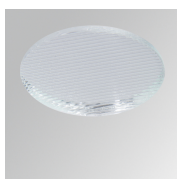
TRACK ACC. END COVER GR.

ACCESORIES :**Optical****Product code:**

HSCU50

Description:

HANCE 1000/2000 ACC. CUTTING BEAM

**Product code:**

HSEL50

Description:

HANCE 1000/2000 ACC. ELIPTICAL LENS

**Product code:**

HSRI65C

Description:

HANCE 1000/2000 ACC. RING DECO CO.

**Product code:**

HSRI65M

Description:

HANCE 1000/2000 ACC. RING DECO MET.

**Product code:**

HSRI65W

Description:

HANCE 1000/2000 ACC. RING DECO WH.