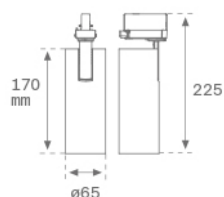


HS1TK20SP840NBW

HANCE TRACK 220 2000 NW SP WH.
Description:

Multi-directional to adapt to three-phase track projector model HANCE TRACK 220 2000 NW SP WH., LAMP brand. Made of textured white color painted injected aluminium. Passive dissipation for a proper thermal management. Model for LED COB, with neutral white colour temperature and control gear included. With Spot high purity aluminium reflector. Insulation class I.

Finish: Texturised white RAL 9010

Weight: 650 g

Installation: 3-Circuit track

TECHNICAL SPECIFICATIONS:

Light output:	1.808 lm	°K :	4000
Plum:	20,7W	CRI :	80
Efficacy:	87,3 lm/w	MacAdam:	3
Type:	COB	Power Supply:	220-240V 50/60Hz
LED Lifetime:	50.000 L80 B10 (Ta=25°C)	Gear:	Electronic
Power:	18W		


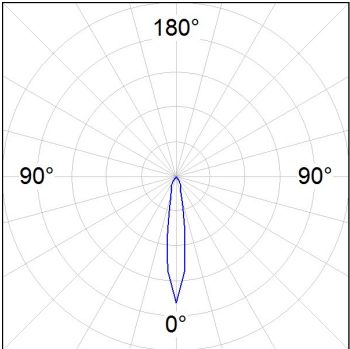
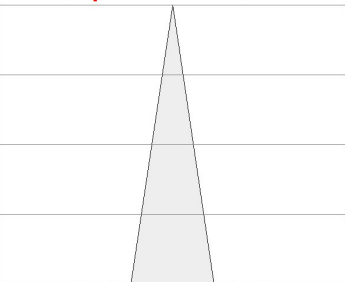
Light output tolerance +/- 10%


CUSTOM MADE OPTIONS:


HS1TK20SP840NBW

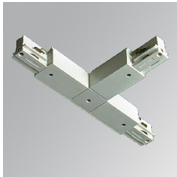
HANCE TRACK 220 2000 NW SP WH.

PHOTOMETRIC DATA :

<div><div>HS1TK20SP840NBW</div><div>η = 100%</div><div>Imax = 5441 cd/klm</div><div>UTE:</div><div>CIE: 101 100 100 100 100</div><div></div></div>		<div><div>alpha = 17,0°</div><div></div></div>	H (m)	D (m)	E _{max}	E _{med}
			1	0,30	9017	6220
			2	0,60	2254	1555
			3	0,90	1002	691
			4	1,19	564	389

ACCESSORIES :

Assembly



Product code:
TKATLODNB
TKATLODNG

Description:
TRACK ACC. EXT LEFT T JOINT BK.
TRACK ACC. EXT LEFT T JOINT GR.

ACCESSORIES :

Optical



Product code:
HSCU50

Description:
HANCE 1000/2000 ACC. CUTTING BEAM



Product code:
HSEL50

Description:
HANCE 1000/2000 ACC. ELIPTICAL LENS



Product code:
HSHO50

Description:
HANCE 1000/2000 ACC. HONEYCOMB GRILLE



Product code:
HSRI65C

Description:
HANCE 1000/2000 ACC. RING DECO CO.



Product code:
HSRI65M

Description:
HANCE 1000/2000 ACC. RING DECO MET.



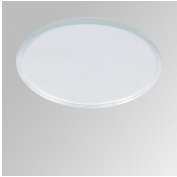
Product code:
HSRI65W

Description:
HANCE 1000/2000 ACC. RING DECO WH.



Product code:
HSSL50

Description:
HANCE 1000/2000 ACC. SOFT LENS



Product code:
HSTR50

Description:
HANCE 1000/2000 ACC. DIF TRANS