

HS1TK10SS840NBW

HANCE TRACK 220 1000 NW SSP WH.
Description:

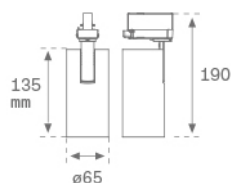
Multi-directional to adapt to three-phase track projector model HANCE TRACK 220 1000 NW SSP WH., LAMP brand. Made of textured white color painted injected aluminium. Passive dissipation for a proper thermal management. Model for LED HI-POWER, with neutral white colour temperature and control gear included. With Superspot optics. Insulation class I.

Finish: Texturised white RAL 9010

Weight: 470 g

IEE : A+

Installation: 3-Circuit track


TECHNICAL SPECIFICATIONS:

Light output:	615 lm	°K :	4000
Plum:	9W	CRI :	80
Efficacy:	72 lm/w	MacAdam:	3
Type:	HIGH POWER CREE	Alimentación:	100-240V 50/60Hz
LED Lifetime:	50.000 L90	Gear:	Electronic
Power:	7W		


CUSTOM MADE OPTIONS:

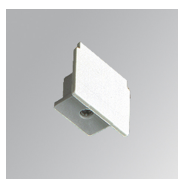
HS1TK10SS840NBW

HANCE TRACK 220 1000 NW SSP WH.

PHOTOMETRIC DATA :

ACCESORIES :

Assembly

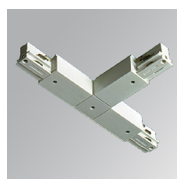


Product code:

TKAECG

Description:

TRACK ACC. END COVER GR.



Product code:

TKATLODNB

TKATLODNG

Description:

TRACK ACC. EXT LEFT T JOINT BK.

TRACK ACC. EXT LEFT T JOINT GR.

ACCESORIES :

Optical

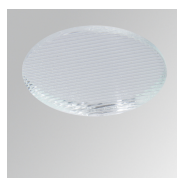


Product code:

HSCU50

Description:

HANCE 1000/2000 ACC. CUTTING BEAM



Product code:

HSEL50

Description:

HANCE 1000/2000 ACC. ELIPTICAL LENS



Product code:

HSR165C

Description:

HANCE 1000/2000 ACC. RING DECO CO.



Product code:

HSR165M

Description:

HANCE 1000/2000 ACC. RING DECO MET.



Product code:

HSR165W

Description:

HANCE 1000/2000 ACC. RING DECO WH.